

UNITARY PLAN UPDATE REQUEST MEMORANDUM

TO Warren McLennan: Manager Regional, North, West and Island, Planning - North/West, Plans & Places



FROM Ciarán Power, Senior Policy Planner

DATE 24 February 2022

SUBJECT Designation in accordance with s168(1) of the
T Resource Management Act of the Auckland Unitary Plan (AUP) Operative in part (15 November 2016)

This memorandum requests an update to Auckland Unitary Plan Operative in part

A decision has been made to confirm a requirement for a new designation under Section 172(1) of the RMA	
Chapter	Chapter K Designations AUP GIS Viewer – Designation’s layer
Section	Schedules and Designations – Minister of Education - North and West
Designation only	
New Designation	Trig Road School
Location:	13-15 Trig Road, Whenuapai
Lapse Date	Five years from date of inclusion in the Auckland Unitary Plan
Type of Designation	New
Purpose	Educational Purposes – Primary School (Years 0-8) and Early Childhood Education (Pre-School)
Requiring Authority	Ministry of Education
Changes to text (shown in underline and strikethrough)	Update Chapter K Designations - Schedules and Designations - Minister of Education, North and West to introduce a new designation and associated conditions. Refer to conditions in Attachment 2 & 4 .
Changes to diagrams	No changes.
Changes to spatial data	Update the AUP GIS Viewer – Unitary Plan Management Layers - Designations to apply a new designation to 13-15 Trig Road, Whenuapai, as per the proposed designation extent shown in Attachment 5 . The designation description is: <u><i>Designations – 4667, Educational Purposes – Primary School (Years 0-8) and Early Childhood Education (Trig Road School)</i></u>
Attachments	Attachment 1: Requiring Authority acceptance letter Attachment 2: Updated text for D4667 (Strikethrough and underlined)

	<p>Attachment 3: Further Clause 20A changes to text</p> <p>Attachment 4: Updated text for D4667 (Clean text)</p> <p>Attachment 5: Updated GIS Viewer</p>
--	---

<p>Prepared by: Ciarán Power Planner, Auckland-wide Planning</p>	<p>Text entered by: Maninder Kaur Planning Technician</p>
<p>Signature: </p>	<p>Signature: </p>
<p>Maps prepared by: Natalia Liana Senior Geospatial Specialist Aucklandwide</p>	<p>Reviewed by Eryn Sheilds Team Leader Regional, North, West, Islands, Plans & Places</p>
<p>Signature: </p>	<p>Signature: </p>
<p>Manager: Warren MacLennan Manager Planning Regional, North, West and Island, Plans & Places</p> <p>Signature:</p>	
	

**Attachment 1: Requiring Authority
acceptance letter**



14 January 2022

Auckland Council
Private Bag 92300
Auckland 1142

Attention: John Duguid
Manager, Plans and Places

Dear John

Decision by the Minister of Education on a Requirement to Designate Land at 13-15 Trig Road, Whenuapai, Auckland for the Purpose of “Educational Purposes – Primary School (Years 0-8) and Early Childhood Education (Pre-School)”.

The Minister of Education (“the Minister”) served a Notice of Requirement on Auckland Council to designate land at 13-15 Trig Road, Whenuapai, Auckland for “*Educational Purposes – Primary School (Years 0-8) and Early Childhood Education (Pre-School)*”. *Phase 1: Overflow school to serve a temporary shortfall in the school network capacity in Whenuapai North and Redhills. Phase 2: School and Early Childhood Education (ECE) to serve the long-term needs of the local adjacent school catchment.*”. This was acknowledged as received by Auckland Council on 9 June 2021.

The matter was considered by a Commissioners Kim Hardy and Richard Blakey with a hearing held “on the papers” on the basis that the submitters confirmed they did not wish to be heard. The recommendation of the Commissioner acting under delegated authority from Auckland Council was received by the Minister’s agent on 23 December 2021. Auckland Council has recommended that the designation be confirmed. The Minister will accept all of Council’s recommended conditions in full. These conditions are set out in Attachment A. It is noted that the catchment boundaries were not included in the Commissioners’ recommendation and thus, are attached in Attachment B and C.

Pursuant to s172(1) of the Resource Management Act 1991 (“the Act”), **the Minister accepts in full** the Council’s recommendation for the following reasons:

1. The designation is reasonably necessary for achieving the objectives of the Minister and will provide for the community’s social, cultural and economic well-being by enabling new educational facilities to be established in the Whenuapai area to serve the educational needs of the community as urban development occurs at Whenuapai in accordance with the development enabled by the Auckland Unitary Plan: Operative in Part (*Auckland Unitary Plan*).
2. The works enabled by the designation are consistent with Part 2 of the Act in that they will promote the sustainable management of natural and physical resources.
3. The provision of the new primary school and early childhood education as provided for by the designation is consistent with relevant national policy statements and the objectives and policies of the Auckland Unitary Plan.

4. The designation and associated conditions will avoid, remedy or mitigate adverse environmental effects associated with any works.

The designation plan and shape file submitted with the Notice of Requirement shows the area of land to be included within the designation.

The designation shall be included in the Auckland Unitary Plan as set out in Attachment A of the recommendation report and the designation plan attached to this decision.

Please notify this decision to all submitters in accordance with s173 of the Act.

Yours sincerely



David Bos

Regional Asset Manager – Te Puna Hanganga, Matihiko | Infrastructure & Digital, Auckland

Under delegated authority from the Minister of Education

T: 09 632 9575

E: David.bos@education.govt.nz

CC: Jo Hart, Senior Policy Planner, Auckland Council

Enc.

Attachment A – Designation Conditions

Attachment B – Whenuapai Catchment Boundary

Attachment C - Massey Redhills Primary Proposed Catchment

Attachment A: Designation and Recommended Conditions

46XX Primary School and ECE Whenuapai

<u>Designation Number</u>	<u>46XX</u>
<u>Requiring Authority</u>	<u>Minister of Education</u>
<u>Location</u>	<u>13-15 Trig Road, Whenuapai</u>
<u>Rollover Designation</u>	<u>NA</u>
<u>Lapse Date</u>	<u>The designation shall lapse on the expiry of 5 years from the date on which it is included in the district plan if it has not been given effect to before the end of that period.</u>

Purpose

Educational Purposes – Primary School (Years 0-8) and Early Childhood Education (Pre-School).

Includes two phases of school development as follows:

- Phase 1: Overflow school to serve a temporary shortfall in the school network capacity in Whenuapai North and Redhills.
- Phase 2: School and Early Childhood Education (ECE) to serve the long-term needs of the local adjacent school catchment.

Conditions

The standard conditions for all Minister of Education designations apply to this designation, except that where any standard condition conflicts with a site-specific condition below, the site-specific condition shall take precedence.

1. Building height in relation to boundary

Any new building or building extension (excluding goal posts and similar structures) shall comply with the height in relation to boundary controls of 2.5m high at the boundary and 45 degrees from any adjoining land zoned primarily for a residential or outdoor space/outdoor recreation purpose (including any future urban zoned land subject to a proposed residential or outdoor space/outdoor recreation purpose zoning in any notified plan change).

2. Noise

The noise (rating) level arising from the operation of the school and pre-school must comply with the following noise levels when measured at the boundary of any residentially zoned site (including any future urban zoned land subject to a proposed residential zoning in any notified plan change), or within the notional boundary of any site in a rural zone:

<u>DAY/TIME</u>	<u>NOISE LEVEL</u>
<u>Mon – Sat, 7.00am – 10.00pm</u> <u>(0700 -2200)</u>	<u>55 dB L_{Aeq}</u>
<u>Sunday 9am to 6pm</u>	
<u>All other times</u>	<u>45 dB L_{Aeq}</u> <u>75 dB L_{AFmax}</u>

These noise limits do not apply to noise from normal school sports and school recreational activities occurring between 8am and 6pm Monday to Saturday.

Noise levels shall be measured and assessed in accordance with NZS 6801: 2008 “Measurement of Environmental Sound” and NZS 6802:2008 “Environmental Noise”.

Noise from construction shall not exceed the limits recommended in, and shall be measured in accordance with, New Zealand Standard NZS 6803:1999 “Acoustics – Construction Noise”.

3. Establishment Outline Plan of Works

The Requiring Authority shall, in accordance with the requirements of s176A of the Resource Management Act 1991, submit separate Outline Plans of Works for the construction and development of both:

- Phase 1: Overflow school to serve a temporary shortfall in the school network capacity in Whenuapai North and Redhills.
- Phase 2: School and Early Childhood Education (ECE) to serve the long-term needs of the local adjacent school catchment as the adjacent area is live zoned and developed for urban purposes.

The outline plans of works for each phase of development described above (Establishment Outline Plan of Works) shall include the following information:

- a) A Design Concept Plan for the site including:
 - i. The general location of access points for vehicles, cyclists, scooters and pedestrians, on-site parking areas (including cars, cycle and scooter parks), and on-site pick up and drop off areas;
 - ii. Measures and treatments at all access points to manage conflict between

- pedestrians, cyclists, scooter users and vehicles;
- iii. General location of building platforms, areas for proposed buildings and open space (such as playgrounds and sports fields); and
 - iv. “Indicative” areas accommodating future education purpose growth development on this site relevant to the particular development phase (i.e. Phase 1 or Phase 2), including building platforms, car parking areas, vehicular access, maneuvering and circulation areas.
- b) A Transport Assessment prepared by a suitably qualified traffic engineer/transportation planner which, taking into account the Integrated Transport Assessment (ITA) prepared by Abley Ltd dated 31 May 2021 and Addendum report dated 20 September 2021, addresses safety, efficiency and the following specific matters:
- i. Safe access for pedestrians, cyclists and vehicles (including buses, rubbish trucks and for ground and building maintenance) and appropriate measures and treatments to minimise conflicts between all transport modes;
 - ii. On-site staff and visitor car parking (including for any ECE constructed as part of Phase 2 of the school site development), cycle and scooter parking, and loading spaces to facilitate deliveries and rubbish removal;
 - iii. On-site pick-up and drop-off area(s) specifically designed to accommodate predicted demand including vehicular access, circulation, maneuvering for cars and buses (if required). The following matters shall specifically be addressed as they relate to the school, and any ECE constructed as part of Phase 2 of the school site development:
 - a) Potential effects on the safe and efficient operation of the surrounding transport network and the internal school circulation;
 - b) Providing for the continuity of cycle and pedestrian facilities;
 - c) Providing safe separated access points to the school for those who walk or cycle on either side of the pick-up and drop off access; and
 - d) An onsite pick-up and drop-off area for the ECE independent of the school;
 - e) The availability and suitability of alternative access, including any alternative roads to Trig Road approved or constructed.
 - iv. Any impediments on the safe and efficient movement of pedestrians and cyclists as they relate to the school and ECE within the surrounding transport network and any measures required to mitigate these;
 - v. Traffic generation and any means of mitigating adverse effects on the efficiency and safety of the surrounding transport network;
 - vi. Unless already delivered by others, details of any on-road interventions and the time and means by which these are to be implemented. On-road interventions may include:

- a. Installation of pedestrian crossing on Trid Road
 - b. Footpath linking Trig Road pedestrian crossing with the entrance to the school
 - c. Localised road widening to include a right turn bay.
- vii. Where vehicular access is provided from Trig Road, the effects of the location and design of vehicular access on the safe and efficient operation of the adjacent transport network having regard to:
- a. Visibility and safe sight distances
 - b. Existing and future traffic conditions including speed, volume, type, current accident rate and the need for safe maneuvering
 - c. Proximity to and operation of intersections
 - d. Existing community or public infrastructure located in any adjoining roads such as bus stops, bus lanes and cycleways and
 - e. Suitability of vehicle access gradients
- viii. Traffic generation and any means of mitigating adverse effects on the efficiency and safety of the surrounding transport network;
- ix. Where alternative road access to Trig Road is available at the time Phase 2 of the school is constructed, means of providing access to the alternative road to either replace or provide supplementary access to the site to reduce vehicle movements to and from Trig Road.
- (c) A summary of the consultation and engagement with Auckland Transport recording agreements reached on the transport matters described below, and effects associated with the school and the ECE on the surrounding existing and future roading network. A copy of the draft Design Concept Plan and draft Traffic Assessment prepared to support the Establishment Outline Plan for each school development phase shall be provided to Auckland Transport for the purposes of this consultation and engagement.

The specific transport matters that will be addressed include:

- i. Measures and treatments to ensure safe access is provided to the school and ECE for all transport modes, including implementation timeframes;
- ii. Measures and treatments to the surrounding road network as they relate to the school and ECE, such as those included in Auckland Transport's Transport Design Manual (TDM) or updated equivalent Auckland Transport design standards which apply at the time of the preparation of the Establishment Outline Plan. These may include road widening, pedestrian and cycle facilities (crossings and paths), right turn bays, signs, road markings (e.g. No Stopping At All Times (NSAAT)), traffic management and calming measures to support forecast increases of traffic and travel modes that are attributed directly to the school and ECE.
- iii. Bus access (if any) and the location of bus stops and shelter along the school and

ECE road frontages;

- iv. Any agreement reached with Auckland Transport on mitigation measures recommended in the Integrated Transport Assessment (ITA), prepared by Abley (dated 31 May 2021) and/or any subsequent transportation assessment, their funding, the authority responsible for their implementation, and the timing for implementation.
- v. Means of providing alternative vehicle access to roads other than Trig Road and the practicality of this taking into account any road access infrastructure already in place.

4. School Travel Plan

- a) Prior to the opening of the school, the requiring authority shall either directly or through the School Board of Trustees, develop a School Travel Plan.
- b) The purpose of the School Travel Plan is to provide specifically for measures to reduce vehicle dependence, including walking school buses, carpooling, the encouragement of the use of public transport, the use of remote pick up/drop off locations if appropriate, and the encouragement of walking and cycling. This Travel Plan shall also specifically address the following matters:
 - i. Safe access to the entry points to the school. Features such as Kea Crossings or Zebra Crossings should be specifically considered;
 - ii. Consistency with or use of Auckland Transport's TravelWise programme, or any equivalent programme adopted;
 - iii. Measures to separate vehicle entry and pedestrian/cyclist entries; and
 - iv. Location and provision on site of any scooter and cycle parking required.
 - v. Any parking management required for events on school grounds (e.g. galas, such as prize givings and other such large-scale events),
- c) The School Travel Plan shall be developed in consultation with Auckland Transport and shall include a monitoring programme. The School Travel Plan shall be reviewed at the time of submitting each subsequent Outline Plan of Works relating to increased teaching spaces.
- d) A joint Travel Plan for the school and ECE on the site may be developed.
- e) For Phase 1 of the school when providing temporary overflow capacity for other schools at Redhills and Whenuapai, the school travel plan shall include details of the shuttle bus services to be implemented under Condition 6, measures to promote shuttle bus use and discourage private vehicle trips to the school, monitoring of shuttle bus usage to ensure an ongoing high uptake, and management measures to be implemented at the PUDO to discourage private vehicle trips for student drop-off and pick-up at peak times.
- f) For Phase 1 of the school when providing temporary overflow capacity for other schools at Redhills and Whenuapai, the school travel plan shall include measures to provide education on the potential risks of students walking over the Trig Road

bridge crossing over the Upper Harbour Motorway and ramps ahead of any upgrading that may occur as Trig Road is upgraded to serve urban development in the area, and where this cannot be avoided promotion of measures such as adult supervision and not cycling on the bridge to minimise risks.

- g) Any necessary measures to manage travel behavior in the transition from Phase 1 to Phase 2 of the school, with a particular consideration of whether the Trig Road Corridor upgrade as outlined in the Supporting Growth Programme has been implemented.

5. On-site pick up and drop off

- a) Vehicular on-site pick-up and drop-off areas for the school shall be provided. The number of pick-up and drop-off bays shall be determined by an assessment of the predicted demand for vehicles entering and exiting the site. This assessment will be undertaken, and the results submitted, as part of any outline plans where there is an increase in teaching spaces. Bays may be provided on a staged basis consistent with each stage of school development.
- b) An assessment of the need for a bus pick-up and drop-off facility for the school shall be submitted as part of any outline plan to increase teaching spaces. Bus facilities may be provided on a staged basis consistent with each stage of school development.

6. Phase 1 Shuttle Bus Services

- a) For Phase 1 of the school, the requiring authority shall, either directly or through the School Board of Trustees, provide and actively promote the use of shuttle bus services to and from the Trig Road site for the school catchment areas identified on the maps titled *Massey Redhills Primary Proposed Catchment* and *Whenuapai School Enrolment Scheme Amendment (Proposed)* attached to this designation. The purpose of the shuttle bus services is to provide a safe, convenient and reliable alternative to private vehicle travel for students and parents. Shuttle bus pick-up and drop-off locations, routes, capacity and frequencies shall be approved by Auckland Transport prior to the opening of Phase 1 of the school.
- b) In order to mitigate the adverse effects of Phase 1 of the school on the surrounding transport network, the shuttle bus services shall account for 80% of student travel to and from the Trig Road site. The requiring authority shall, either directly or through the School Board of Trustees, monitor mode share on a monthly basis to ensure that 80% of student travel to and from the Trig Road site is accounted for through the use of the shuttle bus services. Where 80% of student travel is not accounted for through the use of the shuttle bus services, the requiring authority shall, either directly or through the School Board of Trustees, consult with Auckland Transport on the following matters:
 - i. Methods to better promote the use of the shuttle bus services;
 - ii. Improvements to shuttle bus pick-up and drop-off locations, routes, capacity, and frequencies to ensure that the services are safe, convenient and reliable;
 - iii. Any other methods required to mitigate the effects of Phase 1 of the school on the surrounding transport network.

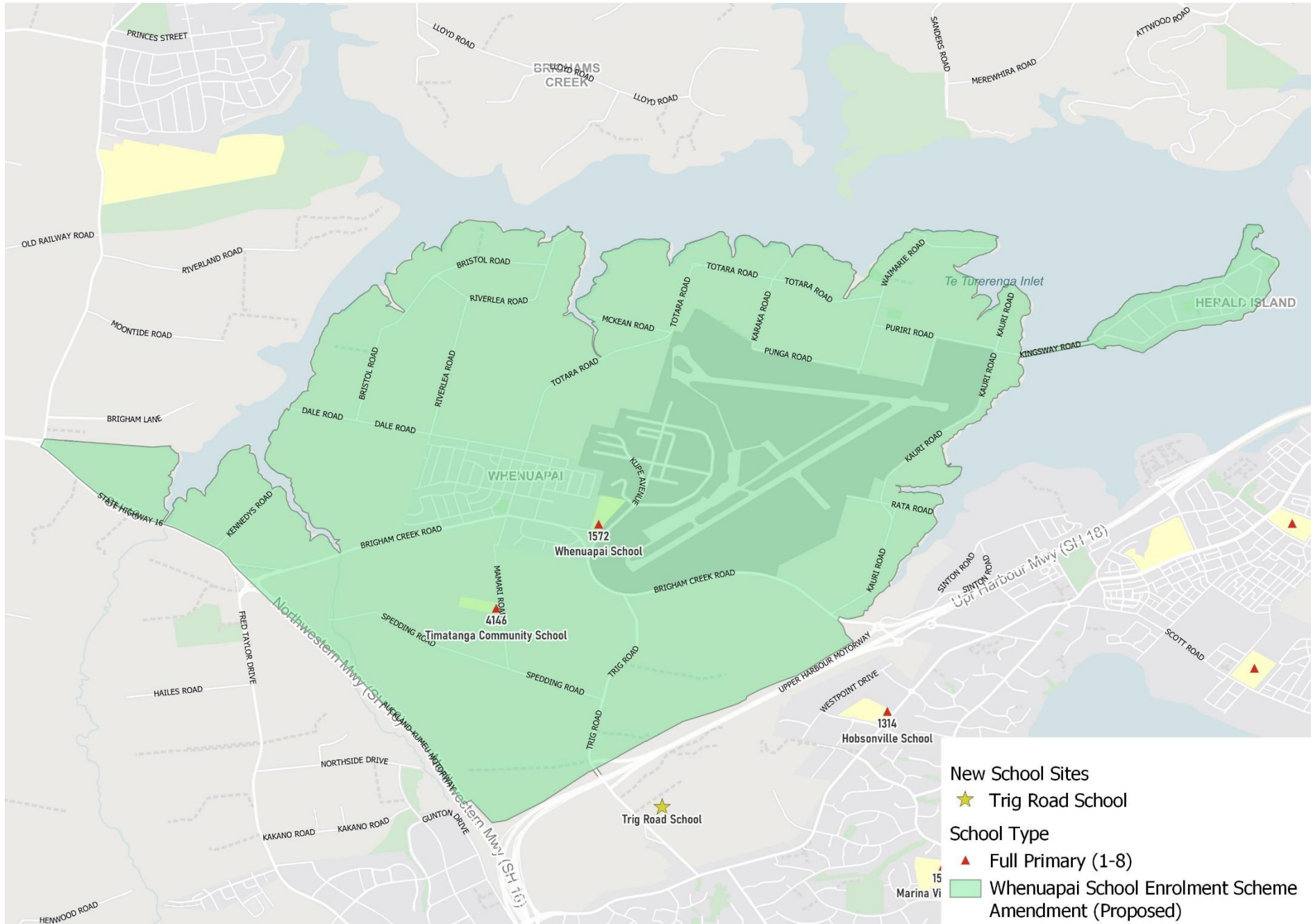
7. Construction

A construction management plan shall be prepared and submitted with any outline plan or works for major site works.

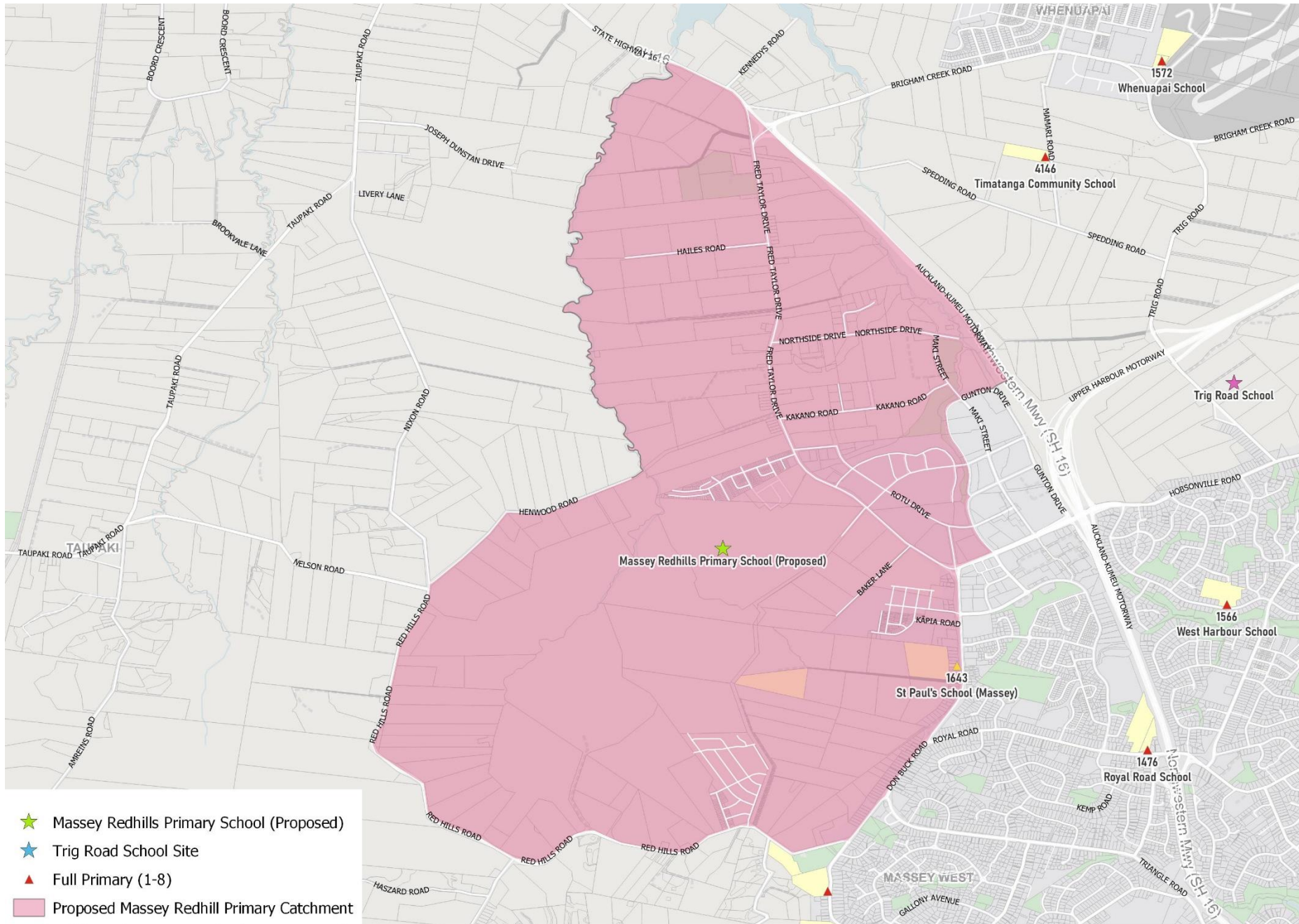
8. Trig Road Widening Project

Unless otherwise agreed with Auckland Transport, no permanent building or structure shall be constructed within 30 metres of the Trig Road site frontage prior to the upgrade of Trig Road, as identified in the Supporting Growth Programme.

Appendix B: Whenuapai Catchment Boundary



Appendix C: Massey Redhills Primary Proposed Catchment



- ★ Massey Redhills Primary School (Proposed)
- ★ Trig Road School Site
- ▲ Full Primary (1-8)
- Proposed Massey Redhill Primary Catchment

**Attachment 2: Updated text for D4667
(Strikethrough and underlined)**

Designation Schedule - Minister of Education (1/3)

North and West

Number	Purpose	Location
4500	Educational purposes - junior high school (years 7 - 10)	19, 286 and 298 Appleby Road, Albany
4501	Educational purposes - primary school (years 0 - 8)	6 Bass Road, Albany
4502	Educational purposes - senior high school (years 11 - 13)	536 and 546 Albany Highway
4503	Educational purposes - primary school (years 0 - 8)	60 Bayview Road, Glenfield
4504	Educational purposes - primary school (years 0 - 8)	181 Bayswater Avenue, Bayswater
4505	Educational purposes - primary school (years 0 - 8)	50 Tramway Road, Beach Haven
4506	Educational purposes – Intermediate School (years 7 – 8)	188 Lake Road, Takapuna
4507	Educational purposes - primary school (years 0 - 8)	3A Harrison Avenue, Takapuna
4508	Educational purposes - primary school (years 7 - 8)	182 Birkdale Road
4509	Educational purposes - primary school (years 0 - 8)	213 Birkdale Road
4510	Educational purposes - primary school (years 0 - 8)	10 Salisbury Road
4511	Educational purposes - secondary school (years 7 - 13) and may include Early Childhood Education (preschool)	140 Birkdale Road
4512	Educational purposes - primary school (years 0 - 8)	77 Mokoai Road
4513	Educational purposes - primary school (years 0 - 8)	40 Browns Bay Road
4514	Educational purposes - primary school (years 0 - 8)	77 Aberdeen Road, Castor Bay
4515	Educational purposes - primary school (years 0 - 8)	2-6 Onetaunga Road, Birkenhead
4516	Educational purposes - primary school (years 0 - 8)	18 Kerr Street
4517	Educational purposes - primary school (years 0 - 8)	48 Forrest Hill Road, Forrest Hill
4518	Educational purposes - primary school (years 0 - 8)	145 Glamorgan Drive
4519	Educational purposes - secondary school (years 7 - 13)	52 Kaipatiki Road, Glenfield
4520	Educational purposes - intermediate school (years 7 - 8)	138 Chivalry Road, Glen Field
4521	Educational purposes - primary school	83A Chivalry Road, Glen Field

	(years 0 - 8)	
4522	Educational purposes - primary school (years 0 - 8)	9 Isobel Road, Greenhithe
4523	Educational purposes - primary school (years 0 - 8)	82 Jutland Road, Takapuna
4524	Educational purposes - primary school (years 0 - 8)	16 McGlashan Place, Beach Haven
4525	Educational purposes - kura kaupapa Māori (years 0 - 13) and may include early childhood education (preschool)	7 Ceres Court, Rosedale
4526	Educational purposes - secondary school (years 7 - 13)	30 Ashley Avenue, Torbay
4527	Educational purposes - primary school (years 0 - 8)	27 Ralph Eagles Place, Torbay
4528	Educational purposes - primary school (years 0 - 8)	13 Agathis Avenue/ Galaxy Drive
4529	Educational purposes - primary school (years 0 - 8)	34 Manuka Road, Glenfield
4530	Educational purposes - primary school (years 0 - 8)	4 Wykeham Place, Glenfield
4531	Educational purposes - primary school (years 0 - 8)	34 Sheakespeare Road, Milford
4532	Educational purposes - primary school (years 0 - 8)	37 Sunrise Avenue, Murrays Bay
4533	Educational purposes - secondary school (years 7 - 13) and may include Early Childhood Education (preschool)	1 Kauri Glen Road
4534	Educational purposes - primary school (years 0 - 8) and may include Early Childhood Education (pre-school)	145-147 Lake Road
4535	Educational purposes - primary school (years 0 - 8)	69 Onewa Road, Northcote
4536	Educational purposes - primary school (years 0 - 8)	14 Sartors Avenue
4537	Educational purposes - primary school (years 0 - 8)	31 Fraser Avenue, Northcote
4538	Educational purposes - primary school (years 0 - 8)	140 Kyle Road, Greenhithe
4539	Educational purposes - primary school (years 0 - 8)	126 Oteha Valley Road, Albany
4540	Educational purposes - primary school (years 0 - 8)	50 Spencer Road, Albany
4542	Educational purposes - secondary school (years 7 - 13)	564 East Coast Road
4543	Educational purposes - primary school (years 0 - 8)	598-602 Paremoremo Road (Cutts Crescent), Albany
4544	Educational purposes - primary school (years 0 - 8)	40 Sartors Avenue
4545	Educational purposes - primary school	15 Russell Street

	(years 0 - 8)	
4546	Educational purposes - primary school (years 0 - 8)	36 Sunnybrae Road
4547	Educational purposes - primary school (years 0 - 8)	35 Lyford Crescent
4548	Educational purposes - secondary school (years 7 - 13)	210 Lake Road, Takapuna
4549	Educational purposes - primary school (years 0 - 8)	40 Northcote Road, Takapuna
4550	Educational purposes - primary school (years 0 - 8)	23 Auburn Street, Takapuna
4551	Educational purposes - primary school (years 0 - 8)	84 Target Road, Takapuna
4552	Educational purposes - primary school (years 0 - 8)	56 Deep Creek Road
4553	Educational purposes - primary school (years 0 - 8)	2a Morrison Avenue
4554	Educational purposes - primary school (years 0 - 8)	136 Verran Road, Birkenhead
4555	Educational purposes - intermediate school (years 7 - 8)	113 Becroft Drive, Forrest Hill
4556	Educational purposes – special school (years 0 – 13)	138 Chivalry Road, Glenfield
4557	Educational purposes - secondary school (years 7 - 13)	30 Forrest Hill Road, Takapuna
4558	Educational purposes - secondary school (years 7 - 13)	2 Wairau Road, Takapuna
4559	Educational purposes - primary school (years 0 - 8)	13-17 Compton Street
4560	Educational purposes - primary school (years 0 - 8)	54 Seaview Road
4561	Educational purposes - primary school (years 0 - 8)	1349 Ahuroa Road
4562	Educational purposes - primary school (years 0 - 8)	24 Mahoenui Valley Road, Albany
4563	Educational purposes - primary school (years 0 - 8)	1220 Dairy Flat Highway, Dairy Flat
4564	Educational purposes - primary school (years 0 - 8)	65 Alec Craig Way, Whangaparoa
4565	Educational purposes - primary school (years 0 - 8)	29 Rata Street Helensville
4566	Educational purposes - primary school (years 0 - 8)	40 Station Road, Huapai
4567	Educational purposes - secondary school (years 7 - 13)	36 Rautawhiri Road, Helensville
4568	Educational purposes - primary school (years 0 - 8)	12 School Road Kaipara
4569	Educational purposes - primary school (years 0 - 8)	979 Kaipara Coast Highway, Kaukapakapa

4570	Educational purposes - primary school (years 0 - 8)	26 Hauraki Road, Leigh
4571	Educational purposes - secondary school (years 7 - 13)	2-30 Woodcocks Road, Warkworth
4572	Educational purposes - primary school (years 0 - 8)	952 Matakana Road, Matakana
4573	Educational purposes - primary school (years 0 - 8)	280 Centreway Road, Orewa
4574	Educational purposes - primary school (years 0 - 8), secondary school (years 7 - 13) and educational purposes	80 Riverside Road, Orewa
4575	Educational purposes - primary school (years 0 - 8) and may include early childhood education (preschool)	86 Marie Road, Orewa
4576	Educational purposes - primary school (years 0 - 8)	4 Bathgate Road, RD2 Wellsford
4577	Educational purposes - primary school (years 0 - 8)	10 Fordyce Road, Helensville
4578	Educational purposes - primary school (years 0 - 8)	20 Albert Hall Drive, Whanaparaoa
4579	Educational purposes - primary school (years 0 - 8)	19 School Road, State Highway 18, Riverhead
4580	Educational purposes - secondary school (years 7 - 13)	287 and 287A Rodney Street Wellsford
4581	Educational purposes - primary school (years 0 - 8) and may include early childhood education (preschool)	2 Longmore Lane, Silverdale
4582	Educational purposes - primary school (years 0 - 8)	62 Dawson Road Snells Beach
4583	Educational purposes - primary school (years 0 - 8), intermediate school (years 7 - 8) and secondary school (years 7 - 13) and may include early childhood education (preschool)	28 Bonita Avenue, Stanmore Bay
4584	Educational purposes - primary school (years 0 - 8) and may include early childhood education (preschool)	30 and 36 Waiora Road, Whangaparaoa
4585	Educational purposes - primary school (years 0 - 8)	1 Okahukura Road, Tapora
4586	Educational purposes - primary school (years 0 - 8)	15 Tauhoa Road, RD 4 Warkworth
4587	Educational purposes - primary school (years 0 - 8)	14 Cottle Road, RD 2 Henderson
4588	Educational purposes - primary school (years 0 - 8)	8 Pakiri Block Road, RD 4 Wellsford
4589	Educational purposes - primary school (years 0 - 8) and may include Early Childhood Education (preschool)	2 Muriwai Road, Waimauku
4590	Educational purposes - primary school (years 0 - 8)	494 Waitoki Road, Kaukapakapa

4591	Educational purposes - primary school (years 0 - 8)	1981 South Head Road, Waioneke
4592	Educational purposes - primary school (years 0 - 8)	1119 Kahikatea Flat Road, Waitoki
4593	Educational purposes - primary school (years 0 - 8)	34A and 35 Hill Street, Warkworth
4594	Educational purposes - primary school (years 0 - 8)	47 School Road, Wellsford
4595	Educational purposes - primary school (years 0 - 8)	39 Ladies Mile, Whangaparaoa
4596	Educational purposes - primary school (years 0 - 8)	1541 State Highway 16, Woodhill
4597	Educational purposes - primary school (years 0 - 8)	11 Arahoe Road, New Lynn
4598	Educational purposes - special school (years 0-13)	82 Tirimoana Road, Te Atatu South
4599	Educational purposes - primary school (years 0 - 8)	23 Karepo Crescent, Henderson
4600	Educational purposes - intermediate school (years 7 - 8)	61 Bruce McLaren Road, Henderson
4601	Educational purposes - primary school (years 0 - 8)	7A Kintara Drive, Royal Heights
4602	Educational purposes - primary school (years 0 - 8)	124 Don Buck Road, Henderson
4603	Educational purposes - primary school (years 0 - 8)	1-29 School Road, Henderson
4604	Educational purposes - primary school (years 0 - 8) and may include Early Childhood Education (preschool)	51-61 Flanshaw Road, Te Atatu
4605	Educational purposes - primary school (years 0 - 8) and may include Early Childhood Education (preschool)	60 Roberts Road, Te Atatu
4606	Educational purposes - primary school (years 0 - 8)	9 Croydon Road, New Lynn
4607	Educational purposes - intermediate school (years 7 - 8)	23 Kaurilands Road, Titirangi
4608	Educational purposes - primary school (years 0 - 8)	3 Glenview Road, Glen Eden
4609	Educational purposes - primary school (years 0 - 8)	60 Barrys Road, Henderson
4610	Educational purposes - primary school (years 0 - 8)	161 Godley Road, Green Bay
4611	Educational purposes - secondary school (years 7 - 13)	131 Godley Road, Green Bay
4612	Educational purposes - secondary school (years 7 - 13)	19 Henderson Valley Road, Henderson
4613	Educational purposes - primary school (years 0 - 8)	70 Lincoln Road, Henderson
4614	Educational purposes - primary school	14 Norval Road, Henderson

	(years 0 - 8)	
4615	Educational purposes - primary school (years 0 - 8)	11A Montel Avenue, Henderson
4616	Educational purposes - primary school (years 0 - 8)	24 Garelja Road, Henderson
4617	Educational purposes - primary school (years 0 - 8)	389 Henderson Valley Road, Henderson
4618	Educational purposes - primary school (years 0 - 8)	104A Hobsonville Road, Hobsonville
4619	Educational purposes - primary school (years 0 - 8)	109 Atkinson Road, Titirangi
4620	Educational purposes - secondary school (years 7 - 13)	78-86 Archibald Road, Kelston
4621	Educational purposes - primary school (years 0 - 8) and intermediate school (years 7 - 8)	12B Vanguard Road, Kelston
4622	Educational purposes - primary school (years 0 - 8), secondary school (years 7 - 13), special school (years 0 - 13) and may include early childhood education (preschool)	3 Archibald Road, New Lynn
4623	Educational purposes - primary school (years 0 - 8)	73 Withers Road, Glen Eden
4624	Educational purposes - primary school (years 0 - 8)	54 Victory Road, Laingholm
4625	Educational purposes - primary school (years 0 - 8)	16 Keegan Drive, Massey
4626	Educational purposes - primary school (years 0 - 8)	97 Marina View Drive, Hobsonville
4627	Educational purposes - secondary school (years 7 - 13)	274 Don Buck Road, Massey
4628	Educational purposes - primary school (years 0 - 8) and may include Early Childhood Education (preschool)	326 Don Buck Road, Henderson
4629	Educational purposes - primary school (years 0 - 8)	63A Matipo Road, Te Atatu
4630	Educational purposes - primary school (years 0 - 8)	1 Hutchinson Avenue, New Lynn
4631	Educational purposes - special school (years 0 - 13)	20 Mayville Avenue, New Lynn
4632	Educational purposes - primary school (years 0 - 8)	552 West Coast Road, Oratia
4633	Withdrawn	
4634	Educational purposes - primary school (years 0 - 8)	33A Pomaria Road, Henderson
4635	Educational purposes - primary school (years 0 - 8)	18 De Havilland Road (, Hobsonville
4636	Educational purposes - primary school (years 0 - 8) and may include early childhood education (preschool)	62 Summerland Drive, Henderson

4637	Educational purposes - primary school (years 0 - 8) and may include Early Childhood Education (preschool)	58 Rosier Road, Glen Eden
4638	Educational purposes - primary school (years 0 - 8)	19 Ozich Avenue, Te Atatu South
4639	Educational purposes - primary school (years 0 - 8), kura kaupapa Māori (years 0 - 8) and may include early childhood education (pre-school)	92 Simpson Road, Ranui
4640	Educational purposes - primary school (years 0 - 8) and may include Early Childhood Education (pre-school)	1/16A Ranui Station Road, Ranui
4641	Educational purposes - primary school (years 0 - 8)	112 Royal Road, Massey
4642	Educational purposes - secondary school (years 7 - 13) and may include Early Childhood Education (pre-school)	18 Kotuku Street, Te Atatu
4643	Educational purposes - primary school (years 0 - 8)	7 Toru Street, Te Atatu
4644	Educational purposes - secondary school (years 7 - 13) and may include early childhood education (preschool)	70 Hobsonville Point Road (Buckley Avenue), Hobsonville
4646	Educational purposes - special school (years 0 - 13)	488E Don Buck Road, Massey
4647	Educational purposes - primary school (years 0 - 8)	34 Ribblesdale Road, Henderson
4648	Educational purposes - primary school (years 0 - 8)	703 Swanson Road, Swanson
4649	Educational purposes - primary school (years 0 - 8)	8 Harbour View Road, Te Atatu North
4650	Educational purposes - primary school (years 0 - 8)	22 Waipani Road, Te Atatu
4651	Educational purposes - primary school (years 0 - 8)	34 Kokiri Street, Te Atatu South
4652	Educational purposes - primary school (years 0 - 8)	1-7 Kohu Road, Titirangi
4653	Educational purposes - secondary school (years 7 - 13)	42-60 Rathgar Road, Henderson
4654	Educational purposes - primary school (years 0 - 8)	10 Bethells Road, Waitakere
4655	Educational purposes - primary school (years 0 - 8) and may include Early Childhood Education (pre-school)	74 Oreil Avenue, Massey
4656	Educational purposes - primary school (years 0 - 8)	124 Sturges Road, Henderson
4657	Educational purposes - primary school (years 0 - 8)	14 Airport Road, Whenuapai
4658	Educational purposes - primary school (years 0 - 8)	202 Woodlands Park Road, Woodlands
4659	Educational purposes – pre-school facility	141 Deep Creek Road, Torbay

4660	Construction for educational purposes	Ashley Avenue (Lot 3 DP 65039) Long Bay
4661	Educational Purposes – Primary School (years 0 to 8) and Early Childhood Education (preschool)	47-49 Gilbransen Road, Huapai
4662	Educational purposes – Primary School (years 0-8) and may include an early childhood education centre (ECE)	11 Scott Road, Hobsonville
4663	Educational purposes – middle school (years 7 to 13)	22-24 Waipareira Avenue, Henderson
4664	Education Purposes – primary school (years 0 – 8) and may include Early Childhood Education (preschool)	71 John Fair Drive, Milldale Lot 9006 DP 545956
4665	Education Purposes – primary school (years 0 – 6) and Early Childhood Education (preschool)	3094-3096 Great North Road, New Lynn
4666	Educational Purposes – primary school (years 0- 6)	2.89 Ha of 289 West Hoe Heights, Orewa (Lot 800 DP 523423)
<u>4667</u>	<u>Educational Purposes – Primary School (Years 0-8) and Early Childhood Education (Pre-School).</u>	<u>13-15 Trig Road, Whenuapai</u>

4667 Primary School and ECE Whenuapai

<u>Designation Number</u>	<u>4667</u>
<u>Requiring Authority</u>	<u>Minister of Education</u>
<u>Location</u>	<u>13-15 Trig Road, Whenuapai</u>
<u>Rollover Designation</u>	<u>NA</u>
<u>Lapse Date</u>	<u>The designation shall lapse on the expiry of 5 years from the date on which it is included in the district plan if it has not been given effect to before the end of that period.</u>

Purpose

Educational Purposes – Primary School (Years 0-8) and Early Childhood Education (Pre-School).

Includes two phases of school development as follows:

- Phase 1: Overflow school to serve a temporary shortfall in the school network capacity in Whenuapai North and Redhills.
- Phase 2: School and Early Childhood Education (ECE) to serve the long-term needs of the local adjacent school catchment.

Conditions

The standard conditions for all Minister of Education designations apply to this designation, except that where any standard condition conflicts with a site-specific condition below, the site-specific condition shall take precedence.

1. Building height in relation to boundary

Any new building or building extension (excluding goal posts and similar structures) shall comply with the height in relation to boundary controls of 2.5m high at the boundary and 45 degrees from any adjoining land zoned primarily for a residential or outdoor space/outdoor recreation purpose (including any future urban zoned land subject to a proposed residential or outdoor space/outdoor recreation purpose zoning in any notified plan change).

2. Noise

The noise (rating) level arising from the operation of the school and pre-school must comply with the following noise levels when measured at the boundary of any residentially zoned site (including any future urban zoned land subject to a proposed residential zoning in any notified plan change), or within the notional boundary of any site in a rural zone:

<u>DAY/TIME</u>	<u>NOISE LEVEL</u>
<u>Mon – Sat, 7.00am – 10.00pm</u> <u>(0700 -2200)</u>	<u>55 dB L_{Aeq}</u>
<u>Sunday 9am to 6pm</u>	
<u>All other times</u>	<u>45 dB L_{Aeq}</u> <u>75 dB L_{AFmax}</u>

These noise limits do not apply to noise from normal school sports and school recreational activities occurring between 8am and 6pm Monday to Saturday.

Noise levels shall be measured and assessed in accordance with NZS 6801: 2008 “Measurement of Environmental Sound” and NZS 6802:2008 “Environmental Noise”.

Noise from construction shall not exceed the limits recommended in, and shall be measured in accordance with, New Zealand Standard NZS 6803:1999 “Acoustics – Construction Noise”.

3. Establishment Outline Plan of Works

The Requiring Authority shall, in accordance with the requirements of s176A of the Resource Management Act 1991, submit separate Outline Plans of Works for the construction and development of both:

- Phase 1: Overflow school to serve a temporary shortfall in the school network capacity in Whenuapai North and Redhills.
- Phase 2: School and Early Childhood Education (ECE) to serve the long-term needs of the local adjacent school catchment as the adjacent area is live zoned and developed for urban purposes.

The outline plans of works for each phase of development described above (Establishment Outline Plan of Works) shall include the following information:

- a) A Design Concept Plan for the site including:
 - i. The general location of access points for vehicles, cyclists, scooters and pedestrians, on-site parking areas (including cars, cycle and scooter parks), and on-site pick up and drop off areas;

- ii. Measures and treatments at all access points to manage conflict between pedestrians, cyclists, scooter users and vehicles;
 - iii. General location of building platforms, areas for proposed buildings and openspace (such as playgrounds and sports fields); and
 - iv. “Indicative” areas accommodating future education purpose growth development on this site relevant to the particular development phase (i.e. Phase 1 or Phase 2), including building platforms, car parking areas, vehicular access, maneuvering and circulation areas.
- b) A Transport Assessment prepared by a suitably qualified traffic engineer/transportation planner which, taking into account the Integrated Transport Assessment (ITA) prepared by Abley Ltd dated 31 May 2021 and Addendum report dated 20 September 2021, addresses safety, efficiency and the following specific matters:
- i. Safe access for pedestrians, cyclists and vehicles (including buses, rubbish trucks and for ground and building maintenance) and appropriate measures and treatments to minimise conflicts between all transport modes;
 - ii. On-site staff and visitor car parking (including for any ECE constructed as part of Phase 2 of the school site development), cycle and scooter parking, and loading spaces to facilitate deliveries and rubbish removal;
 - iii. On-site pick-up and drop-off area(s) specifically designed to accommodate predicted demand including vehicular access, circulation, maneuvering for cars and buses (if required). The following matters shall specifically be addressed as they relate to the school, and any ECE constructed as part of Phase 2 of the school site development:
 - a) Potential effects on the safe and efficient operation of the surrounding transport network and the internal school circulation;
 - b) Providing for the continuity of cycle and pedestrian facilities;
 - c) Providing safe separated access points to the school for those who walk or cycle on either side of the pick-up and drop off access; and
 - d) An onsite pick-up and drop-off area for the ECE independent of the school;
 - e) The availability and suitability of alternative access, including any alternative roads to Trig Road approved or constructed.
 - iv. Any impediments on the safe and efficient movement of pedestrians and cyclists as they relate to the school and ECE within the surrounding transport network and any measures required to mitigate these;
 - v. Traffic generation and any means of mitigating adverse effects on

the efficiency and safety of the surrounding transport network;

- vi. Unless already delivered by others, details of any on-road interventions and the time and means by which these are to be implemented. On-road interventions may include:
 - a. Installation of pedestrian crossing on Trig Road
 - b. Footpath linking Trig Road pedestrian crossing with the entrance to the school
 - c. Localised road widening to include a right turn bay.
- vii. Where vehicular access is provided from Trig Road, the effects of the location and design of vehicular access on the safe and efficient operation of the adjacent transport network having regard to:
 - a. Visibility and safe sight distances
 - b. Existing and future traffic conditions including speed, volume, type, current accident rate and the need for safe maneuvering
 - c. Proximity to and operation of intersections
 - d. Existing community or public infrastructure located in any adjoining roads such as bus stops, bus lanes and cycleways and
 - e. Suitability of vehicle access gradients
- viii. Traffic generation and any means of mitigating adverse effects on the efficiency and safety of the surrounding transport network;
- ix. Where alternative road access to Trig Road is available at the time Phase 2 of the school is constructed, means of providing access to the alternative road to either replace or provide supplementary access to the site to reduce vehicle movements to and from Trig Road.

(c) A summary of the consultation and engagement with Auckland Transport recording agreements reached on the transport matters described below, and effects associated with the school and the ECE on the surrounding existing and future roading network. A copy of the draft Design Concept Plan and draft Traffic Assessment prepared to support the Establishment Outline Plan for each school development phase shall be provided to Auckland Transport for the purposes of this consultation and engagement.

The specific transport matters that will be addressed include:

- i. Measures and treatments to ensure safe access is provided to the school and ECE for all transport modes, including implementation timeframes;
- ii. Measures and treatments to the surrounding road network as they relate to the school and ECE, such as those included in Auckland Transport's Transport Design Manual (TDM) or updated equivalent Auckland Transport design standards which apply at the time of the preparation of the Establishment Outline Plan.

These may include road widening, pedestrian and cycle facilities (crossings and paths), right turn bays, signs, road markings (e.g. No Stopping At All Times (NSAAT)), traffic management and calming measures to support forecast increases of traffic and travel modes that are attributed directly to the school and ECE.

- iii. Bus access (if any) and the location of bus stops and shelter along the school and ECE road frontages;
- iv. Any agreement reached with Auckland Transport on mitigation measures recommended in the Integrated Transport Assessment (ITA), prepared by Abley(dated 31 May 2021) and/or any subsequent transportation assessment, their funding, the authority responsible for their implementation, and the timing for implementation.
- v. Means of providing alternative vehicle access to roads other than Trig Road and the practicality of this taking into account any road access infrastructure already in place.

4. School Travel Plan

- a) Prior to the opening of the school, the requiring authority shall either directly or through the School Board of Trustees, develop a School Travel Plan.
- b) The purpose of the School Travel Plan is to provide specifically for measures to reduce vehicle dependence, including walking school buses, carpooling, the encouragement of the use of public transport, the use of remote pick up/drop off locations if appropriate, and the encouragement of walking and cycling. This Travel Plan shall also specifically address the following matters:
 - i. Safe access to the entry points to the school. Features such as Kea Crossings or Zebra Crossings should be specifically considered;
 - ii. Consistency with or use of Auckland Transport's TravelWise programme, or any equivalent programme adopted;
 - iii. Measures to separate vehicle entry and pedestrian/cyclist entries; and
 - iv. Location and provision on site of any scooter and cycle parking required.
 - v. Any parking management required for events on school grounds (e.g. galas, such as prize givings and other such large-scale events).
- c) The School Travel Plan shall be developed in consultation with Auckland Transport and shall include a monitoring programme. The School Travel Plan shall be reviewed at the time of submitting each subsequent Outline Plan of Works relating to increased teaching spaces.
- d) A joint Travel Plan for the school and ECE on the site may be developed.
- e) For Phase 1 of the school when providing temporary overflow capacity for other

schools at Redhills and Whenuapai, the school travel plan shall include details of the shuttle bus services to be implemented under Condition 6, measures to promote shuttle bus use and discourage private vehicle trips to the school, monitoring of shuttle bus usage to ensure an ongoing high uptake, and management measures to be implemented at the PUDO to discourage private vehicle trips for student drop-off and pick-up at peak times.

- f) For Phase 1 of the school when providing temporary overflow capacity for other schools at Redhills and Whenuapai, the school travel plan shall include measures to provide education on the potential risks of students walking over the Trig Road bridge crossing over the Upper Harbour Motorway and ramps ahead of any upgrading that may occur as Trig Road is upgraded to serve urban development in the area, and where this cannot be avoided promotion of measures such as adult supervision and not cycling on the bridge to minimise risks.
- g) Any necessary measures to manage travel behavior in the transition from Phase 1 to Phase 2 of the school, with a particular consideration of whether the Trig Road Corridor upgrade as outlined in the Supporting Growth Programme has been implemented.

5. On-site pick up and drop off

- a) Vehicular on-site pick-up and drop-off areas for the school shall be provided. The number of pick-up and drop-off bays shall be determined by an assessment of the predicted demand for vehicles entering and exiting the site. This assessment will be undertaken, and the results submitted, as part of any outline plans where there is an increase in teaching spaces. Bays may be provided on a staged basis consistent with each stage of school development.
- b) An assessment of the need for a bus pick-up and drop-off facility for the school shall be submitted as part of any outline plan to increase teaching spaces. Bus facilities may be provided on a staged basis consistent with each stage of school development.

6. Phase 1 Shuttle Bus Services

- a) For Phase 1 of the school, the requiring authority shall, either directly or through the School Board of Trustees, provide and actively promote the use of shuttle bus services to and from the Trig Road site for the school catchment areas identified on the maps titled *Massey Redhills Primary Proposed Catchment* and *Whenuapai School Enrolment Scheme Amendment (Proposed)* attached to this designation. The purpose of the shuttle bus services is to provide a safe, convenient and reliable alternative to private vehicle travel for students and parents. Shuttle bus pick-up and drop-off locations, routes, capacity and frequencies shall be approved by Auckland Transport prior to the opening of Phase 1 of the school.
- b) In order to mitigate the adverse effects of Phase 1 of the school on the surrounding transport network, the shuttle bus services shall account for 80% of student travel to and from the Trig Road site. The requiring authority shall, either directly or through the School Board of Trustees, monitor mode share on a monthly basis to ensure that 80% of student travel to and from the Trig Road site is accounted for through the use of the shuttle bus services. Where 80% of student travel is not accounted for through the use of the shuttle bus services, the requiring authority shall, either

directly or through the School Board of Trustees, consult with Auckland Transport on the following matters:

- i. Methods to better promote the use of the shuttle bus services;
- ii. Improvements to shuttle bus pick-up and drop-off locations, routes, capacity, and frequencies to ensure that the services are safe, convenient and reliable;
- iii. Any other methods required to mitigate the effects of Phase 1 of the school on the surrounding transport network.

7. Construction

A construction management plan shall be prepared and submitted with any outline plan or works for major site works.

8. Trig Road Widening Project

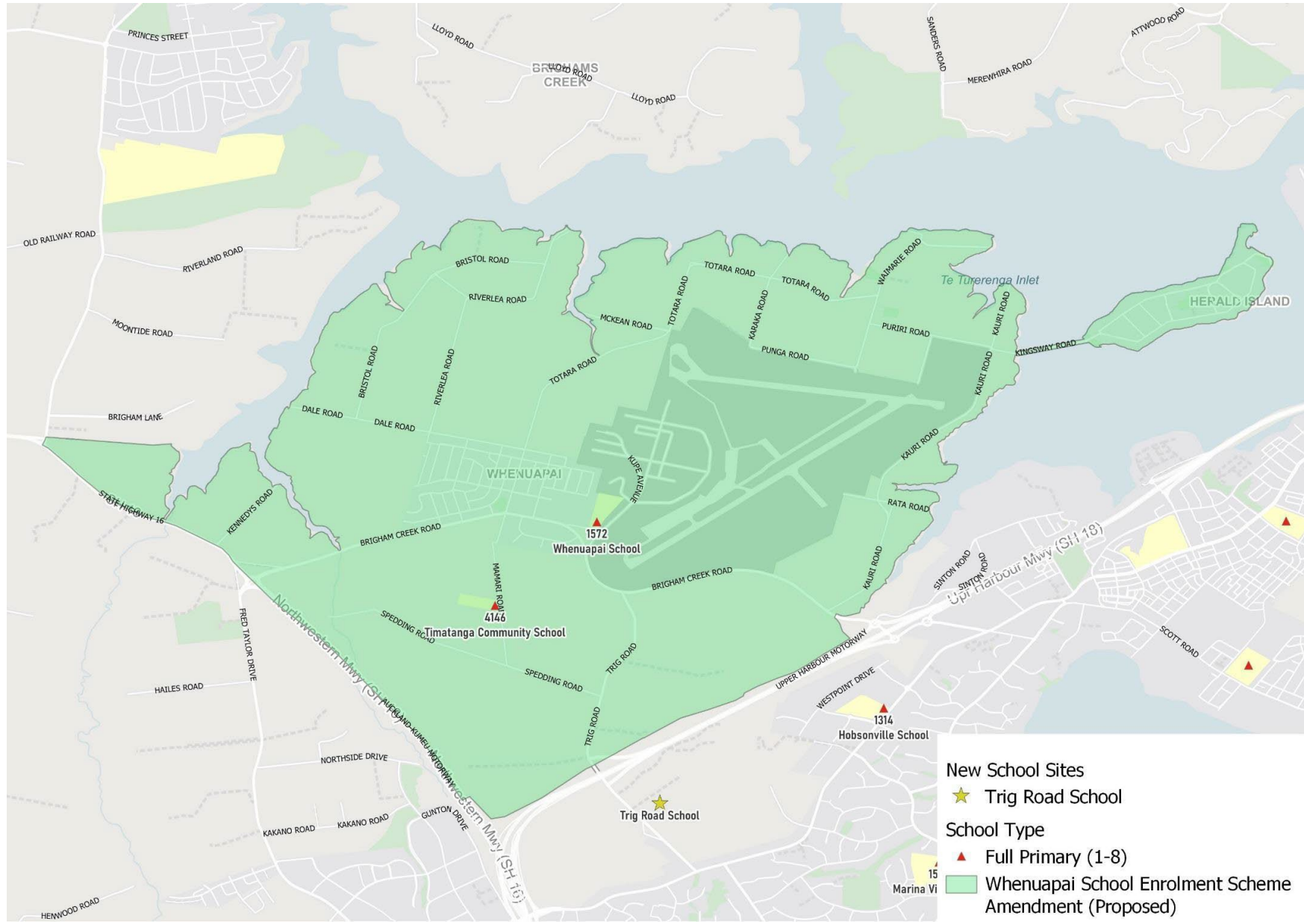
Unless otherwise agreed with Auckland Transport, no permanent building or structure shall be constructed within 30 metres of the Trig Road site frontage prior to the upgrade of Trig Road, as identified in the Supporting Growth Programme

Attachments

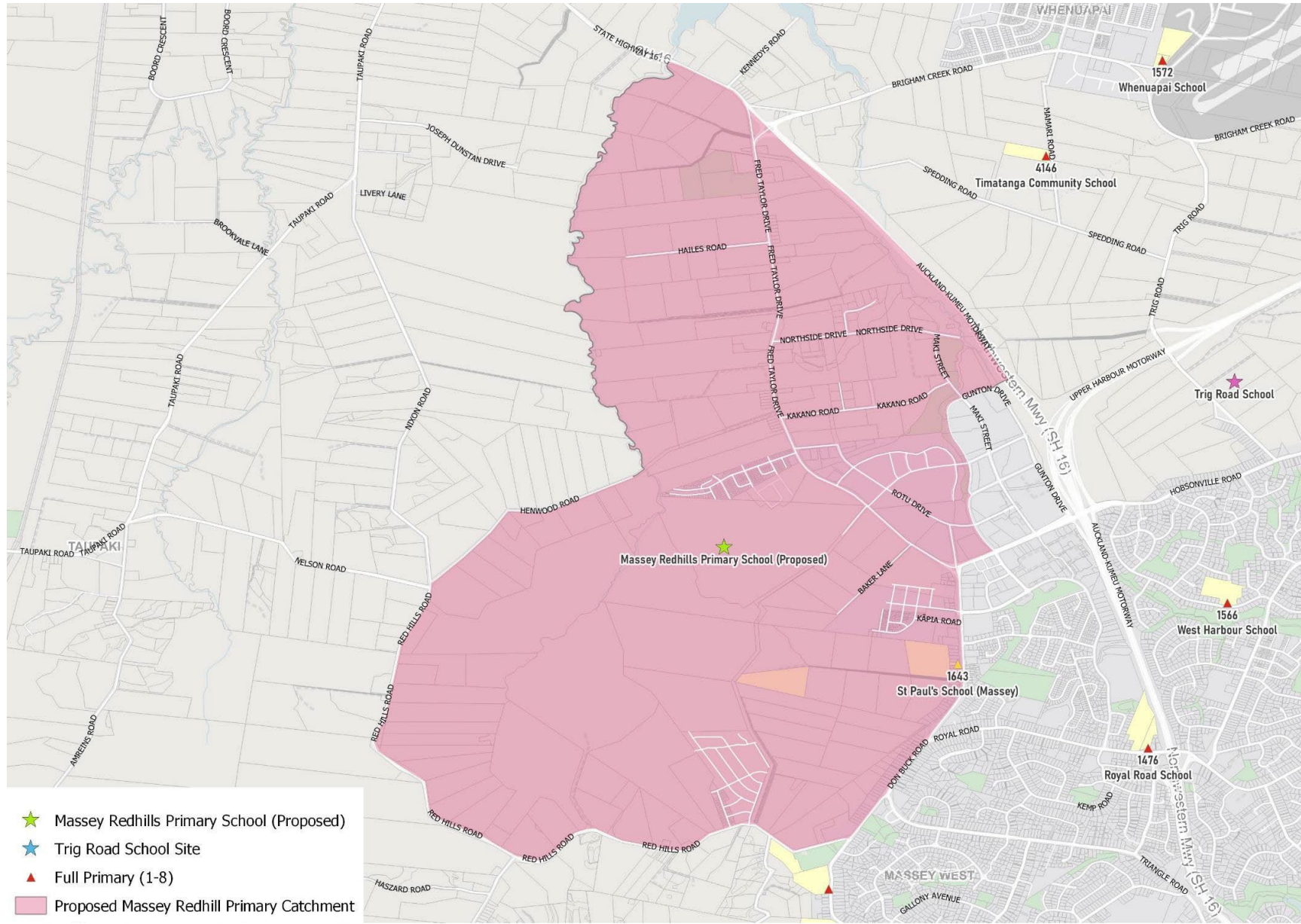
Appendix B: Whenuapai Catchment Boundary

Appendix C: Massey Redhills Primary Proposed Catchment

Appendix B: Whenuapai Catchment Boundary



Appendix C: Massey Redhills Primary Proposed Catchment



**Attachment 3: Further Clause 20A
changes to text**

Memo

Date 07/03/2022

To: Warren Maclennan - Manager Planning – Regional, North, West & Islands
 From: Ciarán Power - Senior Policy Planner, Central/ South





Subject: Plan Modification: Clause 20A modification to Auckland Unitary Plan

Corrections are required to the Auckland Unitary Plan (Operative in Part) 2016 (the AUP).

I seek your approval of this plan modification pursuant to clause 20A, first schedule, Resource Management Act 1991.

You have delegated authority, as a tier four manager, to make a decision to correct an error to an operative plan under clause 20A. Schedule 2A of the Auckland Council Combined Chief Executives Delegation Register¹ authorises all powers, functions, and duties under RMA's first schedule (except clause 17 which cannot be delegated) to tier four positions.

Rule or Section of Unitary Plan	AUP(OIP) Chapter K: Designation Schedule - Minister of Education 4667 Primary School and ECE Whenuapai
Subject Site (if applicable)	13-15 Trig Road, Whenuapai
Legal Description (if applicable)	LOT 5 DP 66045
Nature of change	A Clause 20A modification is required to correct spelling errors and incorrect use of semicolons in Chapter K: Designation Schedule - Minister of Education, 4667 Primary School and ECE Whenuapai, in the AUP.
Effect of change	These changes are for the purpose of correcting minor spelling mistakes and correcting bullet points that used semicolons at the end of sentences. The effect of these changes are neutral and will not affect the rights of some members of the public.
Changes required to be made (text/in-text diagrams)	Amend Chapter K: Designation Schedule - Minister of Education 4667 Primary School and ECE Whenuapai, in the Operative in Part version. Refer to attachment 1
Changes required to be made (maps)	Not Applicable
Attachments	Attachment 1: Corrections to text (strikethrough and underlined in red)

<p>Prepared by: Ciarán Power Senior Policy Planner</p>	<p>Text Entered by: Maninder Kaur Planning Technician</p>
<p>Signature:</p> 	<p>Signature:</p> 
<p>Maps prepared by: Geospatial Analyst</p>	<p>Reviewed by: Eryn Shields Team Leader</p>
<p>Signature: N/A</p>	<p>Signature:</p> 
<p>Decision: I agree/disagree to authorise the Clause 20A modification using my delegated authority</p> <p>Warren MacLennan Manager Planning – Regional, North, West & Islands Date:</p>	
<p>Signature:</p> 	

Attachment 1: Corrections to text of

Attachment A: Designation and Recommended Conditions (strikethrough/coloured red):

Page Number and Location on Page	Corrections to text (strikethrough & underlined in red)
Missing spaces between words	
Page 2 2 Noise	The noise (rating) level arising from the operation of the school and pre-school must comply with the following noise levels when measured at the boundary of any residentially zoned <u>residentially zoned</u> site (including any future urban zoned land subject to a proposed residential zoning in <u>zoning in</u> any notified plan change), or within the notional boundary of any site in a rural zone:
Page 2 3 Establishment Outline Plan of Works	The Requiring Authority shall, in accordance with the requirements of s176A of the Resource Management <u>the Resource Management</u> Act 1991, submit separate Outline Plans of Works for the construction and development of both:
Incorrect use of Semicolons	
Page 2 3 Establishment Outline Plan of Works a) i.	The general location of access points for vehicles, cyclists, scooters and pedestrians, on-site parking areas (including cars, cycle and scooter parks), and on-site pick up and drop off areas ;
Page 3 Top of page	pedestrians, cyclists, scooter users and vehicles ;
Page 3 b) i.	Safe access for pedestrians, cyclists and vehicles (including buses, rubbish trucks and for ground and building maintenance) and appropriate measures and treatments to minimise conflicts between all transport modes ;

<p>Page 3 b) ii.</p>	<p>On-site staff and visitor car parking (including for any ECE constructed as part of Phase 2 of the school site development), cycle and scooter parking, and loading spaces to facilitate deliveries and rubbish removal.</p>
<p>Page 3 b) iii. subsections</p>	<p>a) Potential effects on the safe and efficient operation of the surrounding transport network and the internal school circulation.</p> <p>b) Providing for the continuity of cycle and pedestrian facilities.</p> <p>c) Providing safe separated access points to the school for those who walk or cycle on either side of the pick-up and drop off access; and</p> <p>d) An onsite pick-up and drop-off area for the ECE independent of the school.</p>
<p>Page 3 b) iv & v subsections</p>	<p>Any impediments on the safe and efficient movement of pedestrians and cyclists as they relate to the school and ECE within the surrounding transport network and any measures required to mitigate these.</p> <p>Traffic generation and any means of mitigating adverse effects on the efficiency and safety of the surrounding transport network.</p>
<p>Page 4 viii.</p>	<p>Traffic generation and any means of mitigating adverse effects on the efficiency and safety of</p>

	the surrounding transport network ; .
Page 4 (C) i.	<u>Measures and treatments to ensure safe access is provided to the school and ECE for all transport modes, including implementation</u> timeframes; <u>time frames.</u>
Page 5 Top of page	ECE road frontages ; .
Page 5 4. b) i. & ii.	Safe access to the entry points to the school. Features such as Kea Crossings or Zebra Crossings should be specifically considered ; .
	Consistency with or use of Auckland Transport’s TravelWise programme, or any or any equivalent programme adopted ; .
Page 6 6. b) i. & ii.	Methods to better promote the use of the shuttle bus services ; .
	Improvements to shuttle bus pick-up and drop-off locations, routes, capacity, and frequencies to ensure that the services are safe, convenient and reliable ; .
Incorrect spelling of a word	
Page 3 Top of page iv	“Indicative” areas accommodating future education purpose growth development on this site relevant to the particular development phase (i.e. Phase 1 or Phase 2), including building platforms, car parking areas, vehicular access, maneuvering <u>manouvering</u> and circulation areas.
Page 3 b) iii.	On-site pick-up and drop-off area(s) specifically designed to accommodate predicted demand including vehicular

	<p>access, circulation, maneuvering <u>manouvering</u> for cars and buses (if required). The following matters shall specifically be addressed as they relate to the school, and any ECE constructed as part of Phase 2 of the school site development:</p>
<p>Page 4 Top of page a)</p>	<p>Installation of pedestrian crossing on Trid Trig Road</p>
<p>Page 4 vii, b.</p>	<p>Existing and future traffic conditions including speed, volume, type, current accident rate and the need for safe maneuvering-<u>manouvering</u></p>
<p>Page 4 I i.</p>	<p>Measures and treatments to ensure safe access is provided to the school and ECE for all transport modes, including implementation timeframes; <u>time frames</u>.</p>
<p>Page 5 4. b) v.</p>	<p>Any parking management required for events on school grounds (e.g. galas, such as prize givings <u>giving's</u> and other such large-scale events);;</p>
<p>Page 6 Top of the page</p>	<p>bridge crossing over the Upper Harbour Motorway and ramps ahead of any upgrading that may occur as Trig Road is upgraded to serve urban development inthe <u>in the</u> area, and where this cannot be avoided promotion of measures such as adultsupervision <u>adult supervision</u> and not cycling on the bridge to minimise risks.</p>
<p>Page 6 g)</p>	<p>Any necessary measures to manage travel behavior <u>behaviour</u> in the transition from Phase 1 to Phase 2 of the school, with a</p>

	particular consideration of whether the Trig Road Corridor upgrade as outlined in the Supporting Growth Programme has been implemented.
--	---

**Attachment 4: Updated text for D4667
(Clean text)**

Designation Schedule - Minister of Education (1/3)

North and West

Number	Purpose	Location
4500	Educational purposes - junior high school (years 7 - 10)	19, 286 and 298 Appleby Road, Albany
4501	Educational purposes - primary school (years 0 - 8)	6 Bass Road, Albany
4502	Educational purposes - senior high school (years 11 - 13)	536 and 546 Albany Highway
4503	Educational purposes - primary school (years 0 - 8)	60 Bayview Road, Glenfield
4504	Educational purposes - primary school (years 0 - 8)	181 Bayswater Avenue, Bayswater
4505	Educational purposes - primary school (years 0 - 8)	50 Tramway Road, Beach Haven
4506	Educational purposes – Intermediate School (years 7 – 8)	188 Lake Road, Takapuna
4507	Educational purposes - primary school (years 0 - 8)	3A Harrison Avenue, Takapuna
4508	Educational purposes - primary school (years 7 - 8)	182 Birkdale Road
4509	Educational purposes - primary school (years 0 - 8)	213 Birkdale Road
4510	Educational purposes - primary school (years 0 - 8)	10 Salisbury Road
4511	Educational purposes - secondary school (years 7 - 13) and may include Early Childhood Education (preschool)	140 Birkdale Road
4512	Educational purposes - primary school (years 0 - 8)	77 Mokoai Road
4513	Educational purposes - primary school (years 0 - 8)	40 Browns Bay Road
4514	Educational purposes - primary school (years 0 - 8)	77 Aberdeen Road, Castor Bay
4515	Educational purposes - primary school (years 0 - 8)	2-6 Onetaunga Road, Birkenhead
4516	Educational purposes - primary school (years 0 - 8)	18 Kerr Street
4517	Educational purposes - primary school (years 0 - 8)	48 Forrest Hill Road, Forrest Hill
4518	Educational purposes - primary school (years 0 - 8)	145 Glamorgan Drive
4519	Educational purposes - secondary school (years 7 - 13)	52 Kaipatiki Road, Glenfield
4520	Educational purposes - intermediate school (years 7 - 8)	138 Chivalry Road, Glen Field
4521	Educational purposes - primary school	83A Chivalry Road, Glen Field

	(years 0 - 8)	
4522	Educational purposes - primary school (years 0 - 8)	9 Isobel Road, Greenhithe
4523	Educational purposes - primary school (years 0 - 8)	82 Jutland Road, Takapuna
4524	Educational purposes - primary school (years 0 - 8)	16 McGlashan Place, Beach Haven
4525	Educational purposes - kura kaupapa Māori (years 0 - 13) and may include early childhood education (preschool)	7 Ceres Court, Rosedale
4526	Educational purposes - secondary school (years 7 - 13)	30 Ashley Avenue, Torbay
4527	Educational purposes - primary school (years 0 - 8)	27 Ralph Eagles Place, Torbay
4528	Educational purposes - primary school (years 0 - 8)	13 Agathis Avenue/ Galaxy Drive
4529	Educational purposes - primary school (years 0 - 8)	34 Manuka Road, Glenfield
4530	Educational purposes - primary school (years 0 - 8)	4 Wykeham Place, Glenfield
4531	Educational purposes - primary school (years 0 - 8)	34 Sheakespeare Road, Milford
4532	Educational purposes - primary school (years 0 - 8)	37 Sunrise Avenue, Murrays Bay
4533	Educational purposes - secondary school (years 7 - 13) and may include Early Childhood Education (preschool)	1 Kauri Glen Road
4534	Educational purposes - primary school (years 0 - 8) and may include Early Childhood Education (pre-school)	145-147 Lake Road
4535	Educational purposes - primary school (years 0 - 8)	69 Onewa Road, Northcote
4536	Educational purposes - primary school (years 0 - 8)	14 Sartors Avenue
4537	Educational purposes - primary school (years 0 - 8)	31 Fraser Avenue, Northcote
4538	Educational purposes - primary school (years 0 - 8)	140 Kyle Road, Greenhithe
4539	Educational purposes - primary school (years 0 - 8)	126 Oteha Valley Road, Albany
4540	Educational purposes - primary school (years 0 - 8)	50 Spencer Road, Albany
4542	Educational purposes - secondary school (years 7 - 13)	564 East Coast Road
4543	Educational purposes - primary school (years 0 - 8)	598-602 Paremoremo Road (Cutts Crescent), Albany
4544	Educational purposes - primary school (years 0 - 8)	40 Sartors Avenue
4545	Educational purposes - primary school	15 Russell Street

	(years 0 - 8)	
4546	Educational purposes - primary school (years 0 - 8)	36 Sunnybrae Road
4547	Educational purposes - primary school (years 0 - 8)	35 Lyford Crescent
4548	Educational purposes - secondary school (years 7 - 13)	210 Lake Road, Takapuna
4549	Educational purposes - primary school (years 0 - 8)	40 Northcote Road, Takapuna
4550	Educational purposes - primary school (years 0 - 8)	23 Auburn Street, Takapuna
4551	Educational purposes - primary school (years 0 - 8)	84 Target Road, Takapuna
4552	Educational purposes - primary school (years 0 - 8)	56 Deep Creek Road
4553	Educational purposes - primary school (years 0 - 8)	2a Morrison Avenue
4554	Educational purposes - primary school (years 0 - 8)	136 Verran Road, Birkenhead
4555	Educational purposes - intermediate school (years 7 - 8)	113 Becroft Drive, Forrest Hill
4556	Educational purposes – special school (years 0 – 13)	138 Chivalry Road, Glenfield
4557	Educational purposes - secondary school (years 7 - 13)	30 Forrest Hill Road, Takapuna
4558	Educational purposes - secondary school (years 7 - 13)	2 Wairau Road, Takapuna
4559	Educational purposes - primary school (years 0 - 8)	13-17 Compton Street
4560	Educational purposes - primary school (years 0 - 8)	54 Seaview Road
4561	Educational purposes - primary school (years 0 - 8)	1349 Ahuroa Road
4562	Educational purposes - primary school (years 0 - 8)	24 Mahoenui Valley Road, Albany
4563	Educational purposes - primary school (years 0 - 8)	1220 Dairy Flat Highway, Dairy Flat
4564	Educational purposes - primary school (years 0 - 8)	65 Alec Craig Way, Whangaparoa
4565	Educational purposes - primary school (years 0 - 8)	29 Rata Street Helensville
4566	Educational purposes - primary school (years 0 - 8)	40 Station Road, Huapai
4567	Educational purposes - secondary school (years 7 - 13)	36 Rautawhiri Road, Helensville
4568	Educational purposes - primary school (years 0 - 8)	12 School Road Kaipara
4569	Educational purposes - primary school (years 0 - 8)	979 Kaipara Coast Highway, Kaukapakapa

4570	Educational purposes - primary school (years 0 - 8)	26 Hauraki Road, Leigh
4571	Educational purposes - secondary school (years 7 - 13)	2-30 Woodcocks Road, Warkworth
4572	Educational purposes - primary school (years 0 - 8)	952 Matakana Road, Matakana
4573	Educational purposes - primary school (years 0 - 8)	280 Centreway Road, Orewa
4574	Educational purposes - primary school (years 0 - 8), secondary school (years 7 - 13) and educational purposes	80 Riverside Road, Orewa
4575	Educational purposes - primary school (years 0 - 8) and may include early childhood education (preschool)	86 Marie Road, Orewa
4576	Educational purposes - primary school (years 0 - 8)	4 Bathgate Road, RD2 Wellsford
4577	Educational purposes - primary school (years 0 - 8)	10 Fordyce Road, Helensville
4578	Educational purposes - primary school (years 0 - 8)	20 Albert Hall Drive, Whanaparaoa
4579	Educational purposes - primary school (years 0 - 8)	19 School Road, State Highway 18, Riverhead
4580	Educational purposes - secondary school (years 7 - 13)	287 and 287A Rodney Street Wellsford
4581	Educational purposes - primary school (years 0 - 8) and may include early childhood education (preschool)	2 Longmore Lane, Silverdale
4582	Educational purposes - primary school (years 0 - 8)	62 Dawson Road Snells Beach
4583	Educational purposes - primary school (years 0 - 8), intermediate school (years 7 - 8) and secondary school (years 7 - 13) and may include early childhood education (preschool)	28 Bonita Avenue, Stanmore Bay
4584	Educational purposes - primary school (years 0 - 8) and may include early childhood education (preschool)	30 and 36 Waiora Road, Whangaparaoa
4585	Educational purposes - primary school (years 0 - 8)	1 Okahukura Road, Taporā
4586	Educational purposes - primary school (years 0 - 8)	15 Tauhoa Road, RD 4 Warkworth
4587	Educational purposes - primary school (years 0 - 8)	14 Cottle Road, RD 2 Henderson
4588	Educational purposes - primary school (years 0 - 8)	8 Pakiri Block Road, RD 4 Wellsford
4589	Educational purposes - primary school (years 0 - 8) and may include Early Childhood Education (preschool)	2 Muriwai Road, Waimauku
4590	Educational purposes - primary school (years 0 - 8)	494 Waitoki Road, Kaukapakapa

4591	Educational purposes - primary school (years 0 - 8)	1981 South Head Road, Waioneke
4592	Educational purposes - primary school (years 0 - 8)	1119 Kahikatea Flat Road, Waitoki
4593	Educational purposes - primary school (years 0 - 8)	34A and 35 Hill Street, Warkworth
4594	Educational purposes - primary school (years 0 - 8)	47 School Road, Wellsford
4595	Educational purposes - primary school (years 0 - 8)	39 Ladies Mile, Whangaparaoa
4596	Educational purposes - primary school (years 0 - 8)	1541 State Highway 16, Woodhill
4597	Educational purposes - primary school (years 0 - 8)	11 Arahoe Road, New Lynn
4598	Educational purposes - special school (years 0-13)	82 Tirimoana Road, Te Atatu South
4599	Educational purposes - primary school (years 0 - 8)	23 Karepo Crescent, Henderson
4600	Educational purposes - intermediate school (years 7 - 8)	61 Bruce McLaren Road, Henderson
4601	Educational purposes - primary school (years 0 - 8)	7A Kintara Drive, Royal Heights
4602	Educational purposes - primary school (years 0 - 8)	124 Don Buck Road, Henderson
4603	Educational purposes - primary school (years 0 - 8)	1-29 School Road, Henderson
4604	Educational purposes - primary school (years 0 - 8) and may include Early Childhood Education (preschool)	51-61 Flanshaw Road, Te Atatu
4605	Educational purposes - primary school (years 0 - 8) and may include Early Childhood Education (preschool)	60 Roberts Road, Te Atatu
4606	Educational purposes - primary school (years 0 - 8)	9 Croydon Road, New Lynn
4607	Educational purposes - intermediate school (years 7 - 8)	23 Kaurilands Road, Titirangi
4608	Educational purposes - primary school (years 0 - 8)	3 Glenview Road, Glen Eden
4609	Educational purposes - primary school (years 0 - 8)	60 Barrys Road, Henderson
4610	Educational purposes - primary school (years 0 - 8)	161 Godley Road, Green Bay
4611	Educational purposes - secondary school (years 7 - 13)	131 Godley Road, Green Bay
4612	Educational purposes - secondary school (years 7 - 13)	19 Henderson Valley Road, Henderson
4613	Educational purposes - primary school (years 0 - 8)	70 Lincoln Road, Henderson
4614	Educational purposes - primary school	14 Norval Road, Henderson

	(years 0 - 8)	
4615	Educational purposes - primary school (years 0 - 8)	11A Montel Avenue, Henderson
4616	Educational purposes - primary school (years 0 - 8)	24 Garelja Road, Henderson
4617	Educational purposes - primary school (years 0 - 8)	389 Henderson Valley Road, Henderson
4618	Educational purposes - primary school (years 0 - 8)	104A Hobsonville Road, Hobsonville
4619	Educational purposes - primary school (years 0 - 8)	109 Atkinson Road, Titirangi
4620	Educational purposes - secondary school (years 7 - 13)	78-86 Archibald Road, Kelston
4621	Educational purposes - primary school (years 0 - 8) and intermediate school (years 7 - 8)	12B Vanguard Road, Kelston
4622	Educational purposes - primary school (years 0 - 8), secondary school (years 7 - 13), special school (years 0 - 13) and may include early childhood education (preschool)	3 Archibald Road, New Lynn
4623	Educational purposes - primary school (years 0 - 8)	73 Withers Road, Glen Eden
4624	Educational purposes - primary school (years 0 - 8)	54 Victory Road, Laingholm
4625	Educational purposes - primary school (years 0 - 8)	16 Keegan Drive, Massey
4626	Educational purposes - primary school (years 0 - 8)	97 Marina View Drive, Hobsonville
4627	Educational purposes - secondary school (years 7 - 13)	274 Don Buck Road, Massey
4628	Educational purposes - primary school (years 0 - 8) and may include Early Childhood Education (preschool)	326 Don Buck Road, Henderson
4629	Educational purposes - primary school (years 0 - 8)	63A Matipo Road, Te Atatu
4630	Educational purposes - primary school (years 0 - 8)	1 Hutchinson Avenue, New Lynn
4631	Educational purposes - special school (years 0 - 13)	20 Mayville Avenue, New Lynn
4632	Educational purposes - primary school (years 0 - 8)	552 West Coast Road, Oratia
4633	Withdrawn	
4634	Educational purposes - primary school (years 0 - 8)	33A Pomaria Road, Henderson
4635	Educational purposes - primary school (years 0 - 8)	18 De Havilland Road (, Hobsonville
4636	Educational purposes - primary school (years 0 - 8) and may include early childhood education (preschool)	62 Summerland Drive, Henderson

4637	Educational purposes - primary school (years 0 - 8) and may include Early Childhood Education (preschool)	58 Rosier Road, Glen Eden
4638	Educational purposes - primary school (years 0 - 8)	19 Ozich Avenue, Te Atatu South
4639	Educational purposes - primary school (years 0 - 8), kura kaupapa Māori (years 0 - 8) and may include early childhood education (pre-school)	92 Simpson Road, Ranui
4640	Educational purposes - primary school (years 0 - 8) and may include Early Childhood Education (pre-school)	1/16A Ranui Station Road, Ranui
4641	Educational purposes - primary school (years 0 - 8)	112 Royal Road, Massey
4642	Educational purposes - secondary school (years 7 - 13) and may include Early Childhood Education (pre-school)	18 Kotuku Street, Te Atatu
4643	Educational purposes - primary school (years 0 - 8)	7 Toru Street, Te Atatu
4644	Educational purposes - secondary school (years 7 - 13) and may include early childhood education (preschool)	70 Hobsonville Point Road (Buckley Avenue), Hobsonville
4646	Educational purposes - special school (years 0 - 13)	488E Don Buck Road, Massey
4647	Educational purposes - primary school (years 0 - 8)	34 Ribblesdale Road, Henderson
4648	Educational purposes - primary school (years 0 - 8)	703 Swanson Road, Swanson
4649	Educational purposes - primary school (years 0 - 8)	8 Harbour View Road, Te Atatu North
4650	Educational purposes - primary school (years 0 - 8)	22 Waipani Road, Te Atatu
4651	Educational purposes - primary school (years 0 - 8)	34 Kokiri Street, Te Atatu South
4652	Educational purposes - primary school (years 0 - 8)	1-7 Kohu Road, Titirangi
4653	Educational purposes - secondary school (years 7 - 13)	42-60 Rathgar Road, Henderson
4654	Educational purposes - primary school (years 0 - 8)	10 Bethells Road, Waitakere
4655	Educational purposes - primary school (years 0 - 8) and may include Early Childhood Education (pre-school)	74 Oreil Avenue, Massey
4656	Educational purposes - primary school (years 0 - 8)	124 Sturges Road, Henderson
4657	Educational purposes - primary school (years 0 - 8)	14 Airport Road, Whenuapai
4658	Educational purposes - primary school (years 0 - 8)	202 Woodlands Park Road, Woodlands
4659	Educational purposes – pre-school facility	141 Deep Creek Road, Torbay

4660	Construction for educational purposes	Ashley Avenue (Lot 3 DP 65039) Long Bay
4661	Educational Purposes – Primary School (years 0 to 8) and Early Childhood Education (preschool)	47-49 Gilbransen Road, Huapai
4662	Educational purposes – Primary School (years 0-8) and may include an early childhood education centre (ECE)	11 Scott Road, Hobsonville
4663	Educational purposes – middle school (years 7 to 13)	22-24 Waipareira Avenue, Henderson
4664	Education Purposes – primary school (years 0 – 8) and may include Early Childhood Education (preschool)	71 John Fair Drive, Milldale Lot 9006 DP 545956
4665	Education Purposes – primary school (years 0 – 6) and Early Childhood Education (preschool)	3094-3096 Great North Road, New Lynn
4666	Educational Purposes – primary school (years 0- 6)	2.89 Ha of 289 West Hoe Heights, Orewa (Lot 800 DP 523423)
4667	Educational Purposes – Primary School (Years 0-8) and Early Childhood Education (Pre-School).	13-15 Trig Road, Whenuapai

4667 Primary School and ECE Whenuapai

Designation Number	4667
Requiring Authority	Minister of Education
Location	13-15 Trig Road, Whenuapai
Rollover Designation	NA
	The designation shall lapse on the expiry of 5 years from the date on which it is included in the district plan it has not been given effect to before the end of that period.

Purpose

Educational Purposes – Primary School (Years 0-8) and Early Childhood Education (Pre-School).

Includes two phases of school development as follows:

- Phase 1: Overflow school to serve a temporary shortfall in the school network capacity in Whenuapai North and Redhills.
- Phase 2: School and Early Childhood Education (ECE) to serve the long-term needs of the local adjacent school catchment.

Conditions

The standard conditions for all Minister of Education designations apply to this designation, except that where any standard condition conflicts with a site-specific condition below, the site-specific condition shall take precedence.

1. Building height in relation to boundary

Any new building or building extension (excluding goal posts and similar structures) shall comply with the height in relation to boundary controls of 2.5m high at the boundary and 45 degrees from any adjoining land zoned primarily for a residential or outdoor space/outdoor recreation purpose (including any future urban zoned land subject to a proposed residential or outdoor space/outdoor recreation purpose zoning in any notified plan change)

2. Noise

The noise (rating) level arising from the operation of the school and pre-school must comply with the following noise levels when measured at the boundary of any residentially zoned site (including any future urban zoned land subject to a proposed residential zoning in any notified plan change), or within the notional boundary of any site in a rural zone:

DAY/TIME	NOISE LEVEL
Mon – Sat, 7.00am – 10.00pm (0700 -2200)	55 dB L _{Aeq}
Sunday 9am to 6pm	
All other times	45 dB L _{Aeq} 75 dB L _{AFmax}

These noise limits do not apply to noise from normal school sports and school recreational activities occurring between 8am and 6pm Monday to Saturday.

Noise levels shall be measured and assessed in accordance with NZS 6801: 2008 “Measurement of Environmental Sound” and NZS 6802:2008 “Environmental Noise”.

Noise from construction shall not exceed the limits recommended in, and shall be measured in accordance with, New Zealand Standard NZS 6803:1999 “Acoustics – Construction Noise”.

3. Establishment Outline Plan of Works

The Requiring Authority shall, in accordance with the requirements of s176A of the Resource Management Act 1991, submit separate Outline Plans of Works for the construction and development of both:

- Phase 1: Overflow school to serve a temporary shortfall in the school network capacity in Whenuapai North and Redhills.
- Phase 2: School and Early Childhood Education (ECE) to serve the long-term needs of the local adjacent school catchment as the adjacent area is live zoned and developed for urban purposes.

The outline plans of works for each phase of development described above (Establishment Outline Plan of Works) shall include the following information:

- a) A Design Concept Plan for the site including:
 - i. The general location of access points for vehicles, cyclists, scooters and pedestrians, on-site parking areas (including cars, cycle and scooter parks), and on-site pick up and drop off areas.

- ii. Measures and treatments at all access points to manage conflict between pedestrians, cyclists, scooter users and vehicles.
 - iii. General location of building platforms, areas for proposed buildings and open space (such as playgrounds and sports fields); and
 - iv. “Indicative” areas accommodating future education purpose growth development on this site relevant to the particular development phase (i.e. Phase 1 or Phase 2), including building platforms, car parking areas, vehicular access, manoeuvring and circulation areas.
- b) A Transport Assessment prepared by a suitably qualified traffic engineer/transportation planner which, taking into account the Integrated Transport Assessment (ITA) prepared by Abley Ltd dated 31 May 2021 and Addendum report dated 20 September 2021, addresses safety, efficiency and the following specific matters:
- i. Safe access for pedestrians, cyclists and vehicles (including buses, rubbish trucks and for ground and building maintenance) and appropriate measures and treatments to minimise conflicts between all transport modes.
 - ii. On-site staff and visitor car parking (including for any ECE constructed as part of Phase 2 of the school site development), cycle and scooter parking, and loading spaces to facilitate deliveries and rubbish removal.
 - iii. On-site pick-up and drop-off area(s) specifically designed to accommodate predicted demand including vehicular access, circulation, manoeuvring for cars and buses (if required). The following matters shall specifically be addressed as they relate to the school, and any ECE constructed as part of Phase 2 of the school site development:
 - a) Potential effects on the safe and efficient operation of the surrounding transport network and the internal school circulation.
 - b) Providing for the continuity of cycle and pedestrian facilities.
 - c) Providing safe separated access points to the school for those who walk or cycle on either side of the pick-up and drop off access; and
 - d) An onsite pick-up and drop-off area for the ECE independent of the school
 - e) The availability and suitability of alternative access, including any alternative roads to Trig Road approved or constructed.
 - iv. Any impediments on the safe and efficient movement of pedestrians and cyclists as they relate to the school and ECE within the surrounding transport network and any measures required to mitigate these.
 - v. Traffic generation and any means of mitigating adverse effects on the efficiency and safety of the surrounding transport network.
 - vi. Unless already delivered by others, details of any on-road interventions and

the time and means by which these are to be implemented. On-road interventions may include:

- a. Installation of pedestrian crossing on Trig Road
 - b. Footpath linking Trig Road pedestrian crossing with the entrance to the school
 - c. Localised road widening to include a right turn bay.
- vii. Where vehicular access is provided from Trig Road, the effects of the location and design of vehicular access on the safe and efficient operation of the adjacent transport network having regard to:
- a. Visibility and safe sight distances
 - b. Existing and future traffic conditions including speed, volume, type, current accident rate and the need for safe manouvering
 - c. Proximity to and operation of intersections
 - d. Existing community or public infrastructure located in any adjoining roads such as bus stops, bus lanes and cycleways and
 - e. Suitability of vehicle access gradients
- viii. Traffic generation and any means of mitigating adverse effects on the efficiency and safety of the surrounding transport network.
- ix. Where alternative road access to Trig Road is available at the time Phase 2 of the school is constructed, means of providing access to the alternative road to either replace or provide supplementary access to the site to reduce vehicle movements to and from Trig Road.
- (c) A summary of the consultation and engagement with Auckland Transport recording agreements reached on the transport matters described below, and effects associated with the school and the ECE on the surrounding existing and future roading network. A copy of the draft Design Concept Plan and draft Traffic Assessment prepared to support the Establishment Outline Plan for each school development phase shall be provided to Auckland Transport for the purposes of this consultation and engagement.

The specific transport matters that will be addressed include:

- i. Measures and treatments to ensure safe access is provided to the school and ECE for all transport modes, including implementation time frames.
- ii. Measures and treatments to the surrounding road network as they relate to the school and ECE, such as those included in Auckland Transport's Transport Design Manual (TDM) or updated equivalent Auckland Transport design standards which apply at the time of the preparation of the Establishment Outline Plan. These may include road widening, pedestrian and cycle facilities (crossings and paths), right turn bays, signs, road markings (e.g. No Stopping At All Times (NSAAT)), traffic management and calming measures to support forecast increases of traffic and travel modes that are attributed directly to the school and ECE.

- iii. Bus access (if any) and the location of bus stops and shelter along the school and ECE road frontages.
- iv. Any agreement reached with Auckland Transport on mitigation measures recommended in the Integrated Transport Assessment (ITA), prepared by Abley (dated 31 May 2021) and/or any subsequent transportation assessment, their funding, the authority responsible for their implementation, and the timing for implementation.
- v. Means of providing alternative vehicle access to roads other than Trig Road and the practicality of this taking into account any road access infrastructure already in place.

4. School Travel Plan

- a) Prior to the opening of the school, the requiring authority shall either directly or through the School Board of Trustees, develop a School Travel Plan.
- b) The purpose of the School Travel Plan is to provide specifically for measures to reduce vehicle dependence, including walking school buses, carpooling, the encouragement of the use of public transport, the use of remote pick up/drop off locations if appropriate, and the encouragement of walking and cycling. This Travel Plan shall also specifically address the following matters:
 - i. Safe access to the entry points to the school. Features such as Kea Crossings or Zebra Crossings should be specifically considered.
 - ii. Consistency with or use of Auckland Transport's Travel Wise programme, or any equivalent programme adopted.
 - iii. Measures to separate vehicle entry and pedestrian/cyclist entries; and
 - iv. Location and provision on site of any scooter and cycle parking required.
 - v. Any parking management required for events on school grounds (e.g. galas, such as prize giving's and other such large-scale events),
- c) The School Travel Plan shall be developed in consultation with Auckland Transport and shall include a monitoring programme. The School Travel Plan shall be reviewed at the time of submitting each subsequent Outline Plan of Works relating to increased teaching spaces.
- d) A joint Travel Plan for the school and ECE on the site may be developed.
- e) For Phase 1 of the school when providing temporary overflow capacity for other schools at Redhills and Whenuapai, the school travel plan shall include details of the shuttle bus services to be implemented under Condition 6, measures to promote shuttle bus use and discourage private vehicle trips to the school, monitoring of shuttle bus usage to ensure an ongoing high uptake, and management measures to be implemented at the PUDO to discourage private vehicle trips for student drop-off and pick-up at peak times.

- f) For Phase 1 of the school when providing temporary overflow capacity for other schools at Redhills and Whenuapai, the school travel plan shall include measures to provide education on the potential risks of students walking over the Trig Road bridge crossing over the Upper Harbour Motorway and ramps ahead of any upgrading that may occur as Trig Road is upgraded to serve urban development in the area, and where this cannot be avoided promotion of measures such as adult supervision and not cycling on the bridge to minimise risks.
- g) Any necessary measures to manage travel behaviour in the transition from Phase 1 to Phase 2 of the school, with a particular consideration of whether the Trig Road Corridor upgrade as outlined in the Supporting Growth Programme has been implemented.

5. On-site pick up and drop off

- a) Vehicular on-site pick-up and drop-off areas for the school shall be provided. The number of pick-up and drop-off bays shall be determined by an assessment of the predicted demand for vehicles entering and exiting the site. This assessment will be undertaken, and the results submitted, as part of any outline plans where there is an increase in teaching spaces. Bays may be provided on a staged basis consistent with each stage of school development.
- b) An assessment of the need for a bus pick-up and drop-off facility for the school shall be submitted as part of any outline plan to increase teaching spaces. Bus facilities may be provided on a staged basis consistent with each stage of school development.

6. Phase 1 Shuttle Bus Services

- a) For Phase 1 of the school, the requiring authority shall, either directly or through the School Board of Trustees, provide and actively promote the use of shuttle bus services to and from the Trig Road site for the school catchment areas identified on the maps titled *Massey Redhills Primary Proposed Catchment* and *Whenuapai School Enrolment Scheme Amendment (Proposed)* attached to this designation. The purpose of the shuttle bus services is to provide a safe, convenient and reliable alternative to private vehicle travel for students and parents. Shuttle bus pick-up and drop-off locations, routes, capacity and frequencies shall be approved by Auckland Transport prior to the opening of Phase 1 of the school.
- b) In order to mitigate the adverse effects of Phase 1 of the school on the surrounding transport network, the shuttle bus services shall account for 80% of student travel to and from the Trig Road site. The requiring authority shall, either directly or through the School Board of Trustees, monitor mode share on a monthly basis to ensure that 80% of student travel to and from the Trig Road site is accounted for through the use of the shuttle bus services. Where 80% of student travel is not accounted for through the use of the shuttle bus services, the requiring authority shall, either directly or through the School Board of Trustees, consult with Auckland Transport on the following matters:
 - i. Methods to better promote the use of the shuttle bus services.
 - ii. Improvements to shuttle bus pick-up and drop-off locations, routes, capacity, and frequencies to ensure that the services are safe, convenient and reliable.

7. Any other methods required to mitigate the effects of Phase 1 of the school on the surrounding transport network. Construction

A construction management plan shall be prepared and submitted with any outline plan or works for major site works.

8. Trig Road Widening Project

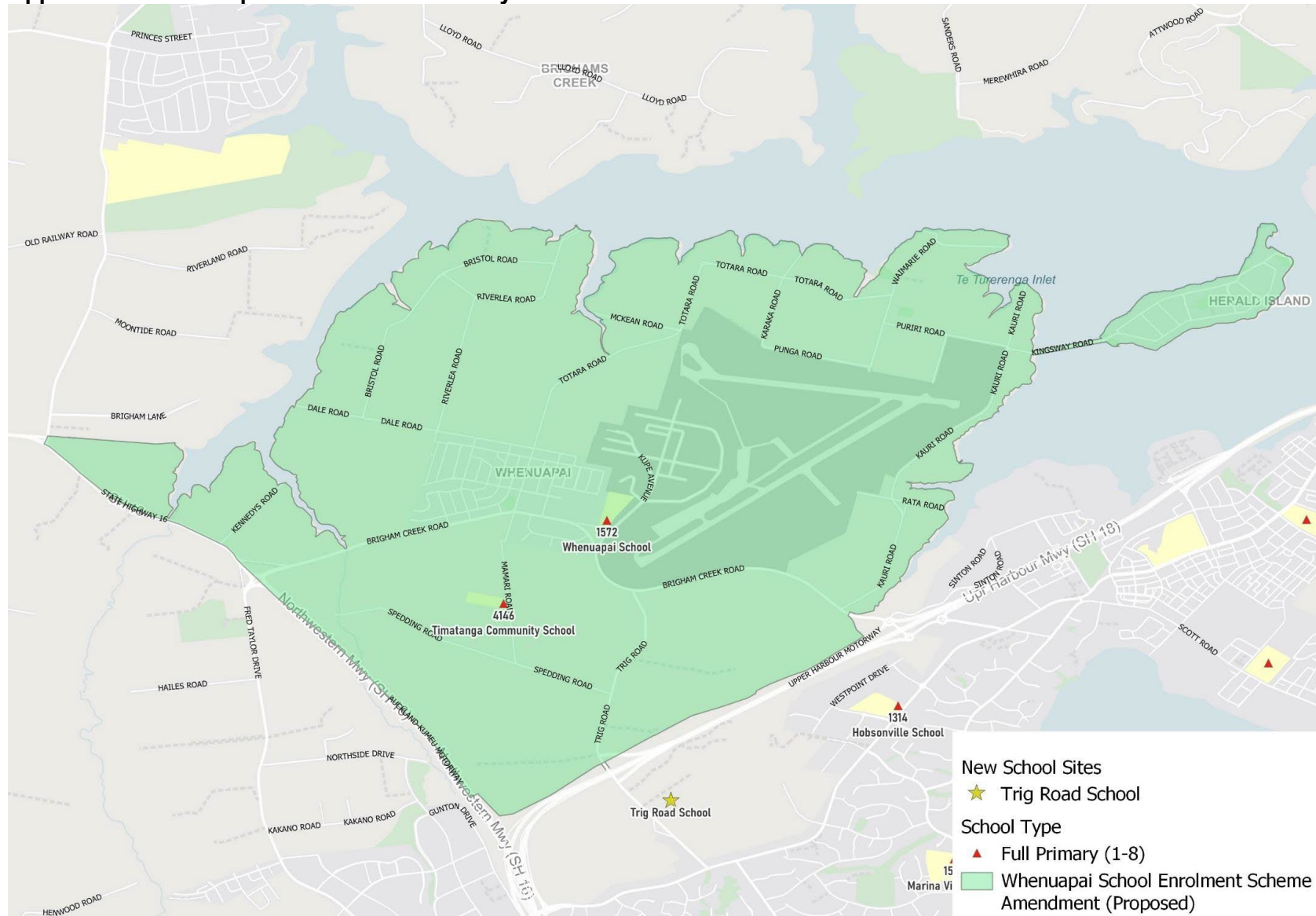
Unless otherwise agreed with Auckland Transport, no permanent building or structure shall be constructed within 30 metres of the Trig Road site frontage prior to the upgrade of Trig Road, as identified in the Supporting Growth Programme

Attachments

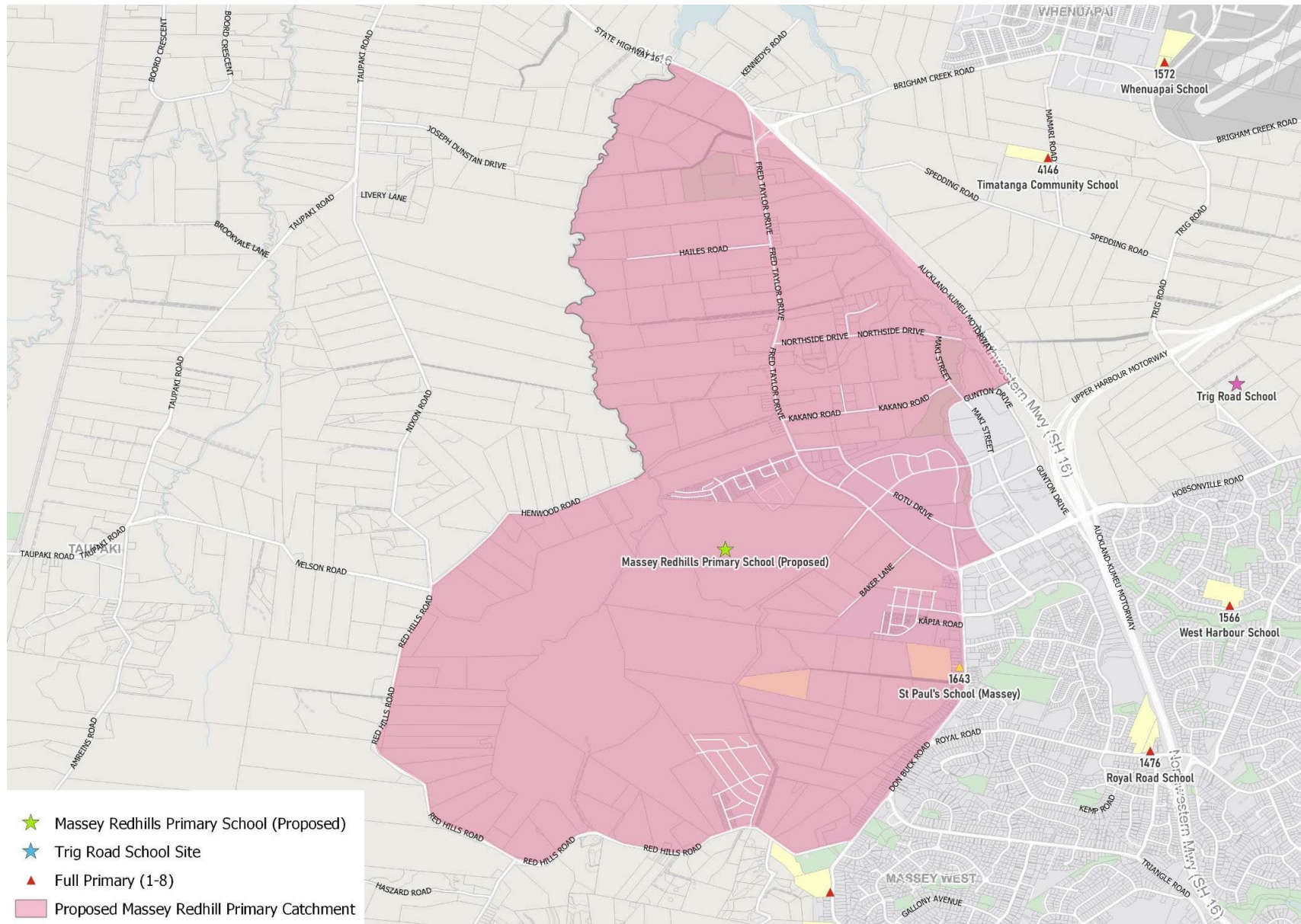
Appendix B: Whenuapai Catchment Boundary

Appendix C: Massey Redhills Primary Proposed Catchment

Appendix B: Whenuapai Catchment Boundary



Appendix C: Massey Redhills Primary Proposed Catchment



Attachment 5: Updated GIS Viewer

BEFORE



Parcel boundary

AFTER

Parcel boundary
Designation

4667

0 40 80 160 Metres

Whilst due care has been taken, Auckland Council gives no warranty as to the accuracy and completeness of any information on this map/plan and accepts no liability for any error, omission or use of the information.

Date: 8/03/2022

Designation - 4667
Primary School and ECE Whenuapai
Minister of Education

